


202x


唐宇迪人工智能开发工程师：机器学习算法详解

演讲人

202x-11-11

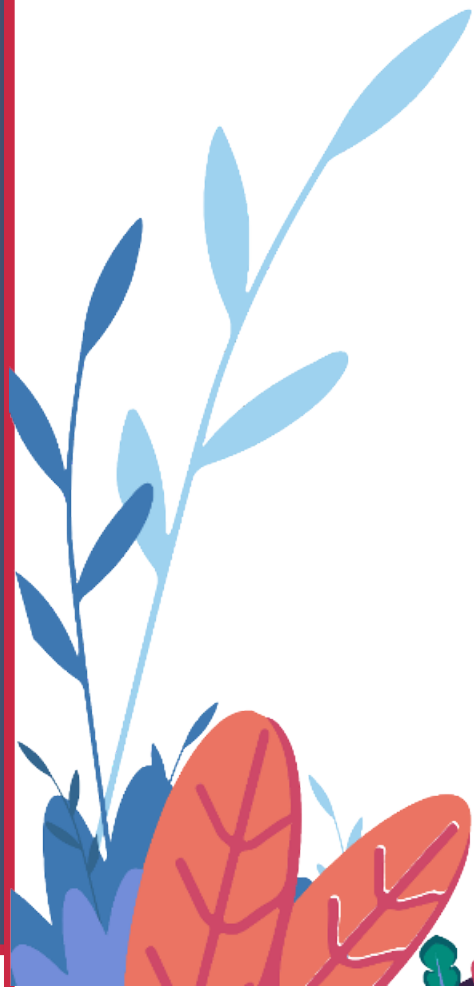


人工智能开发工程师课程导
学

A scenic landscape featuring a large body of water in the foreground, a dark forested shoreline, and a range of mountains in the background under a clear blue sky. A large white circle is centered over the image, containing the title text.

k|临近算法概述

模型评估





数据预处理



sklearn库与功能



多变量knn模型




回归问题概述






误差项定义

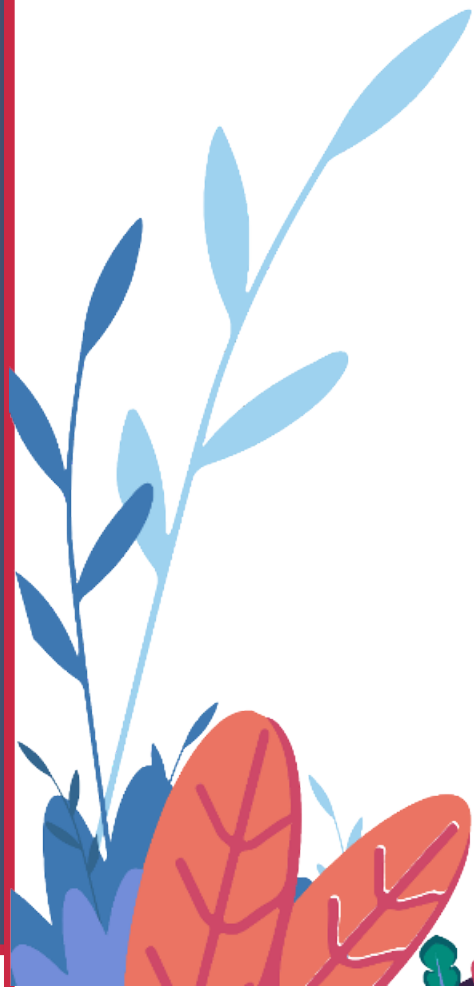
A scenic landscape featuring a large body of water in the foreground, a dark forested shoreline, and a vast mountain range in the background under a clear blue sky. A large, semi-transparent white circle is centered over the image, containing the title text.

独立同分布的意义



似然函数的作用

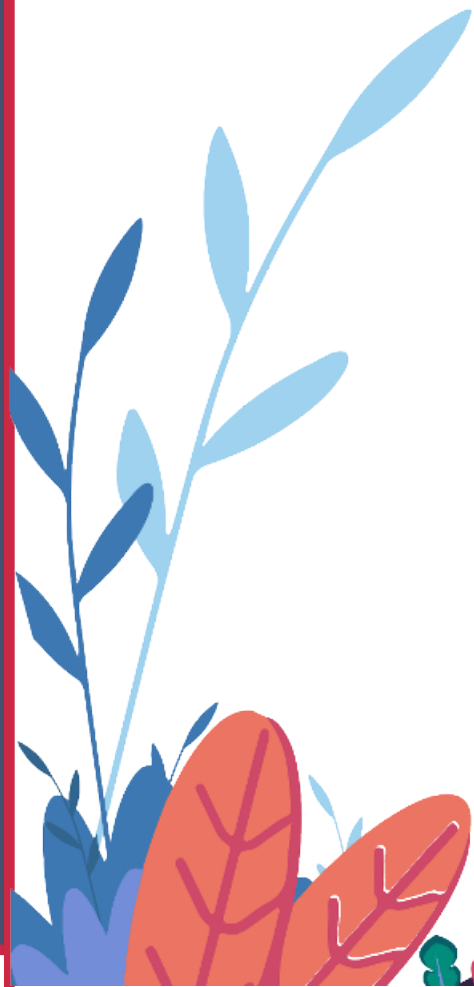
参数求解






逻辑回归算法原理

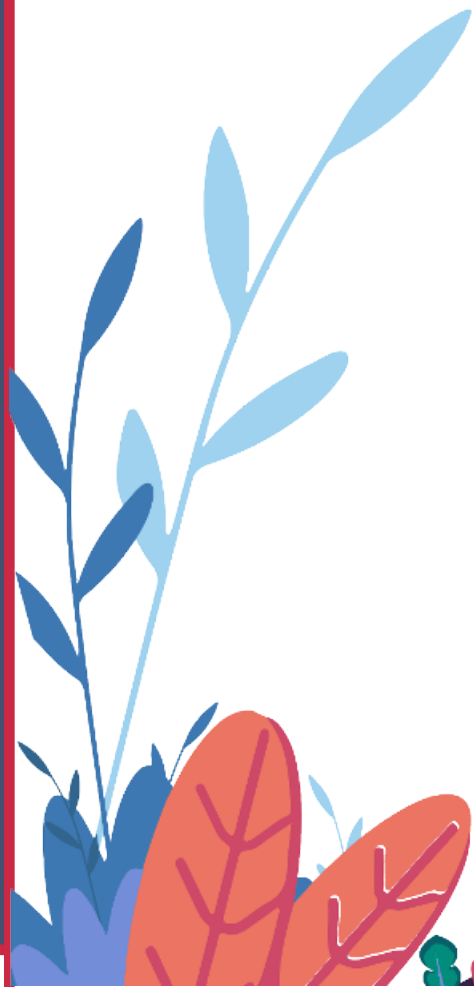
化简与求解





决策树算法概述


熵的作用





信息增益原理





决策树构造实例



信息增益率与gini 系数





预剪枝方法



以上内容仅为本文档的试下载部分，为可阅读页数的一半内容。如要下载或阅读全文，请访问：
<https://d.book118.com/148126007017006121>