

# Upgrade Information of MPE720 Version 7.24

## 1.Added and Improved Functions

### 1.1 Ver.7.24 Upgrade Information

Items added and features improved from MPE720 version 7.23 to version 7.24 are as follows.

No.	Feature	Classification
1	267IF-01 (CC-Link Master) module was added.	Add function
2	The mode 4 was added to the ACCMODE command of Motion Program.	Add function
3	"Non FD" was added to the setting item of the transmission protocol of 217IF-01 module.	Improvement
4	The variable auto-registration function of the Ladder program was supported.	Improvement
5	The copy option of the register comment was supported in the replace function of Ladder editor.	Improvement
6	The move option of the register comment was supported in the Replace in the Project.	Improvement
7	The replace function of the motion register was supported in the Replace in the Project.	Improvement
8	The replace function of Bit type registers has been improved in the Replace in the Project.	Improvement
9	The export function of variable and comment has been improved.	Improvement
10	Conversion operation of symbols has been improved.	Improvement
11	The compatible mode of MPE720 Ver6 of project files were added to the Environment Setting.	Improvement
12	The Register Map function was added to Comment List function.	Improvement
13	The display improvement of the output log of the Search function was carried out.	Improvement
14	The improvement of the export and import function of the Tuning panel was executed.	Improvement
15	The improvement of the sampling period of Real-Time Trace function was carried out.	Improvement
16	The shortcut key of Ladder program was added.	Improvement
17	The improvement of operation of the program selection check tree was carried out.	Improvement
18	The compile operation of Ladder program has been improved.	Improvement
19	The compile operation of "Compile All Programs" has been improved.	Improvement
20	The operation of "Open program" of Ladder program has been improved.	Improvement
21	The input operation of the FUNC command of Ladder program has been improved.	Improvement
22	The improvement of the "Axis Type Setting" screen of the Axis Setup Wizard function was carried out.	Improvement
23	The display improvement of the Edit Parameter dialog of Ladder editor was carried out.	Improvement
24	The improvement of the Search of Ladder editor was carried out.	Improvement
25	The display improvement of Motion Command of Axis Monitor was carried out.	Improvement
26	The improvement of saving a project file has been carried out.	Improvement
27	The conversion operation to a Ver6 compatible project file (extension: YMW) from the compressed file (extension: MAL) of MPE720 Ver5 has been improved.	Improvement

28	The operation Saving of the SVB module of MC-Configurator has been improved. (PART 1)	Improvement
29	The operation Saving of the SVB module of MC-Configurator has been improved. (PART 2)	Improvement
30	The display improvement of the SERVOPACK version of Servo Parameter screen was carried out.	Improvement
31	The improvement of operation at the time of communication disconnection of a communication platform was carried out.	Improvement

(\*): When MPE720 Ver.7 before MPE720 Ver.7.11 is already installed in Windows Vista and Windows 7, it may not operate for the newest information of the servo model addition by the axial setup wizard function (the newest information added into the database) updated by after MPE720 Ver.7.13.

Please refer to the following page for operating procedures.

## 【About the restriction matter when using MPE720 Ver.7 in Windows Vista and Windows 7】

When MPE720 Ver.7 is used in Windows Vista and Windows 7, the following phenomena might be generated.

### <Phenomena>

When MPE720 Ver.7 before MPE720 Ver.7.11 is already installed in Windows Vista and Windows 7, it may not operate for the newest information of the servo model addition by the axial setup wizard function (the newest information added into the database) updated by after MPE720 Ver.7.13.

### <Measures>

Using a batch file, the following folder is deleted. (\*1)

C:\Users\UserName(\*2)\AppData\Local\VirtualStore\Program Files(\*3)\YASKAWA\MPE720 Ver7

### Procedure

1.The batch file enclosed by MPE720 Ver.7 installer is copied to a desktop.

#### 【Download Version】

MPE720Ver7\_xxx(\*4)\Tools\CleanUp\MPE720Ver7\_x86.bat (32bitOS)

MPE720Ver7\_xxx(\*4)\Tools\CleanUp\MPE720Ver7\_x64.bat (64bitOS)

#### 【CD Media Version】

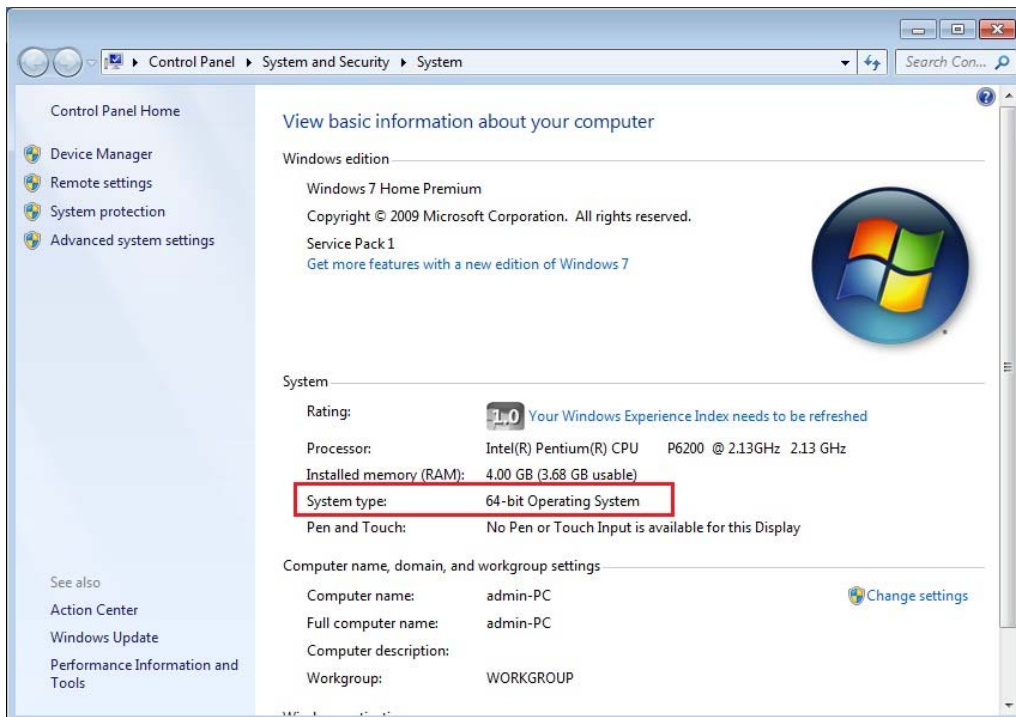
D(\*5):\Tools\CleanUp\MPE720Ver7\_x86.bat (32bitOS)

D(\*5):\Tools\CleanUp\MPE720Ver7\_x64.bat (64bitOS)

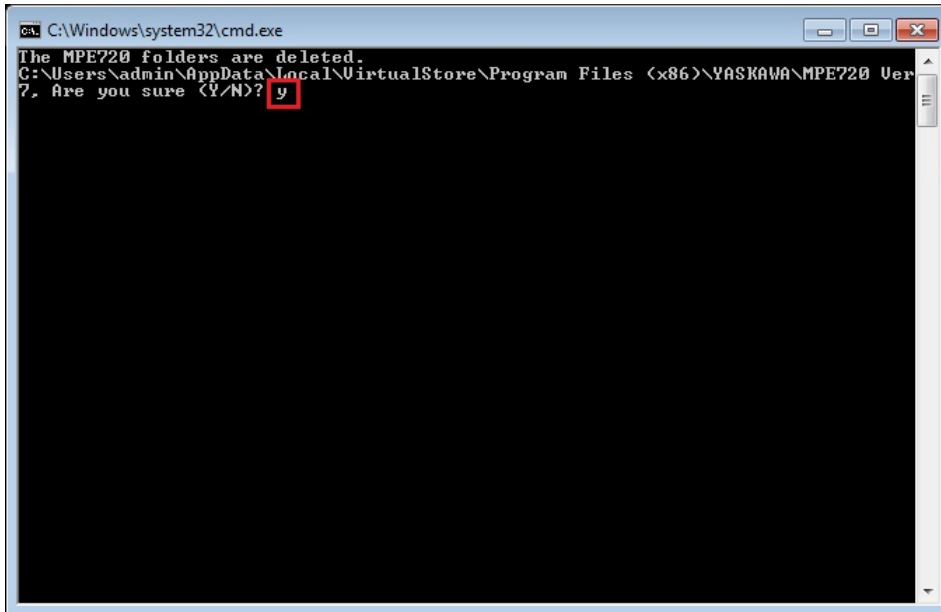
2.The copied batch file is performed.

MPE720Ver7\_x86.bat (32bitOS)

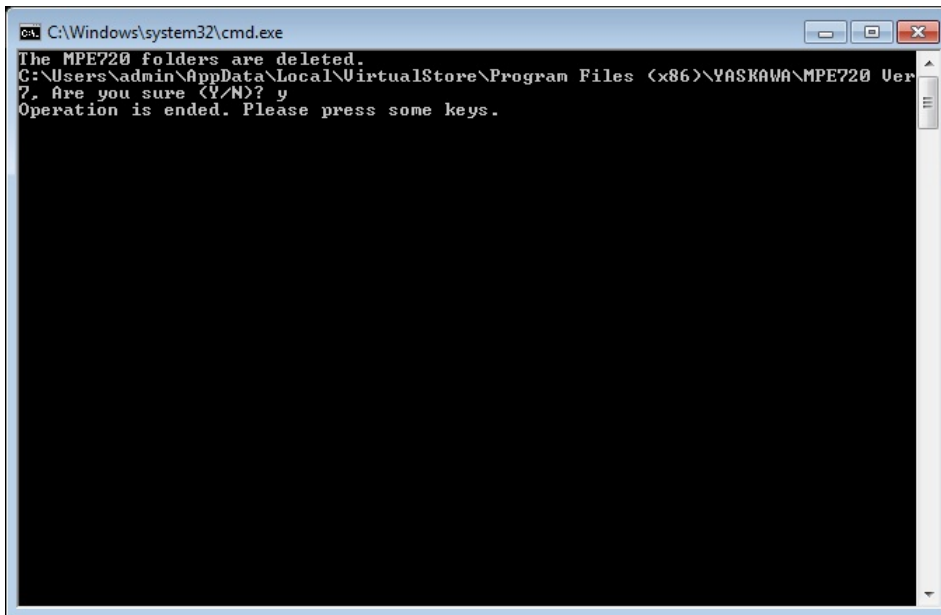
MPE720Ver7\_x64.bat (64bitOS)



3. "y" is inputted on a command prompt and the Enter button is pushed.



4. The Enter button is pushed on a command prompt after deletion.



- (\*1): When multi-user is using one set of PC, please operate it by each user.
- (\*2): The user account name that logs in enters.
- (\*3): The path changes by OS.
  - 32bitOS: Program Files
  - 64bitOS: Program Files (x86)
- (\*4): The path changes by version.
- (\*5): The path changes by CD/DVD drive.
- (\*6): When an installation path is changed at the time of MPE720 Ver.7 installation, please delete the "MPE720 Ver7" folder which a folder subordinate has below manually according to the installed path.
  - C:\Users¥UserName(\*2)\AppData\Local\VirtualStore

## 【About compile of the parallel circuit】

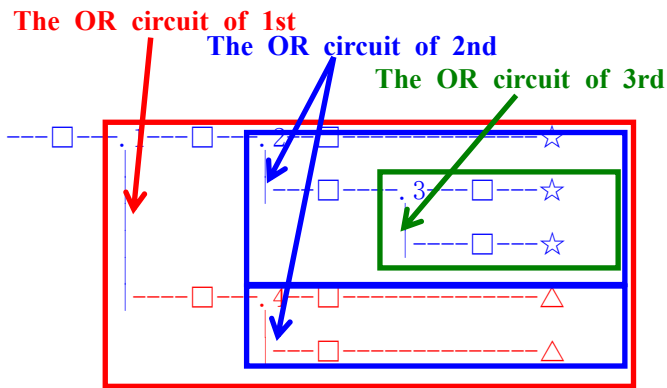
In the Ladder program of MPE720 Ver7 before MPE720 Ver7.23, when the parallel circuit is used, the following phenomena may occur.

<Phenomena>

When the circuit containing the following pattern was created, there was a phenomenon of operating without receiving the condition that the circuit below the OR circuit of 1st class must operate essentially in response to the conditional instruction before the OR circuit of 1st class.

<Measures>

When a phenomenon occurs, please carry out re-compile about the Ladder program in MPE720 Ver7 after MPE720 Ver7.24. Or please carry out again "Compile All Programs" of "Compile" menu.



The OR circuit of 1st class: The OR circuit branched from the bus-bar of language.

The OR circuit of 2nd class: The OR circuit branched out of the OR circuit of 1st class.

The OR circuit of 3rd class: The OR circuit branched out of the OR circuit of 2nd class.

□(Conditional instruction): NO Contact, NC Contact, Coil, instruction(==, !=, >, <), power line (-----) etc.

☆(Output instruction): Coil, Block instruction(Expression, STORE, COPYW) etc

※However, when all ☆ is coil commands, a phenomenon does not occur.

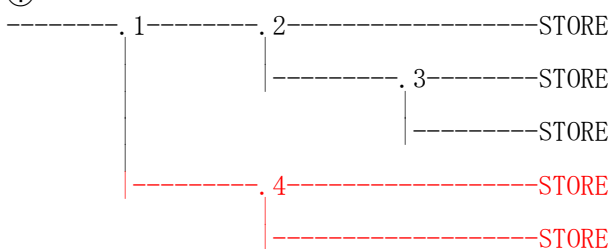
△(Output instruction): Coil, Block instruction(Expression, STORE, COPYW)etc

<Pattern>

Symbol	Instruction
	NO Contact
STORE	STORE instruction
()	Coil

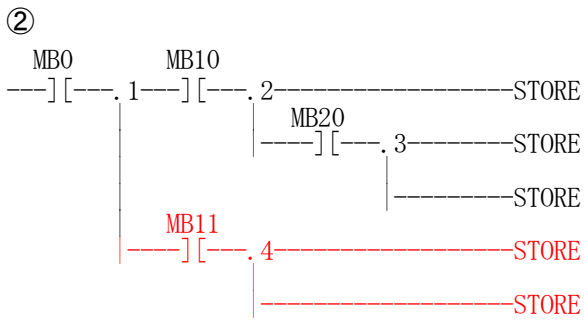
<NG Pattern>

①



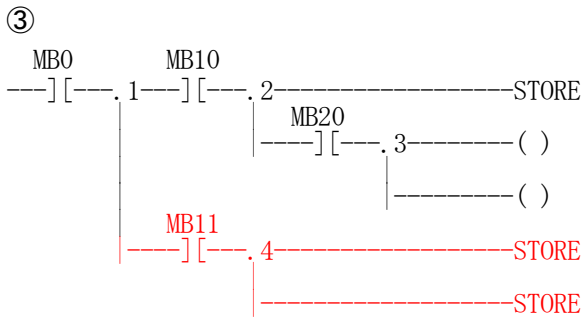
This pattern is minimum circuit pattern.

This is NG.



It is NG even if the minimum circuit pattern has conditional instructions (NO Contact etc.).

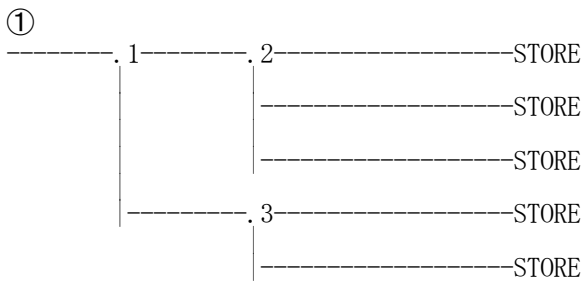
This is NG



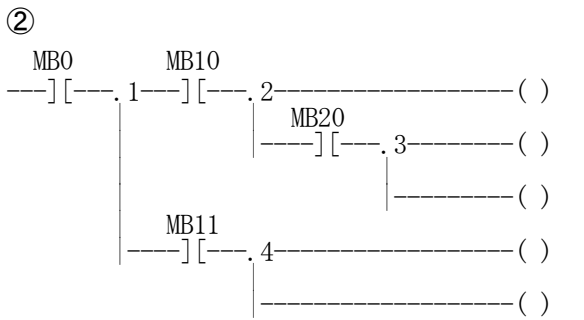
It is NG when there are at least one block commands (STORE command etc.) here.

This is NG

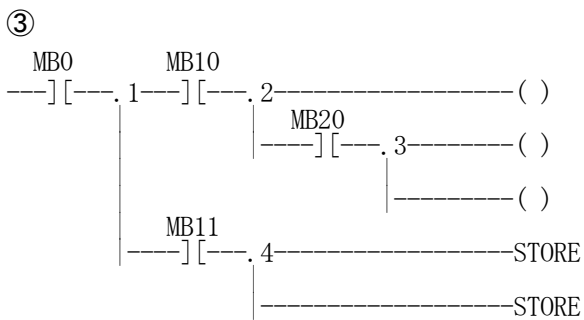
<OK Pattern>



Since it is the OR circuit of 2nd, it is OK.



Since it is the coil altogether, it is OK.



Since it is the coil altogether, it is OK.

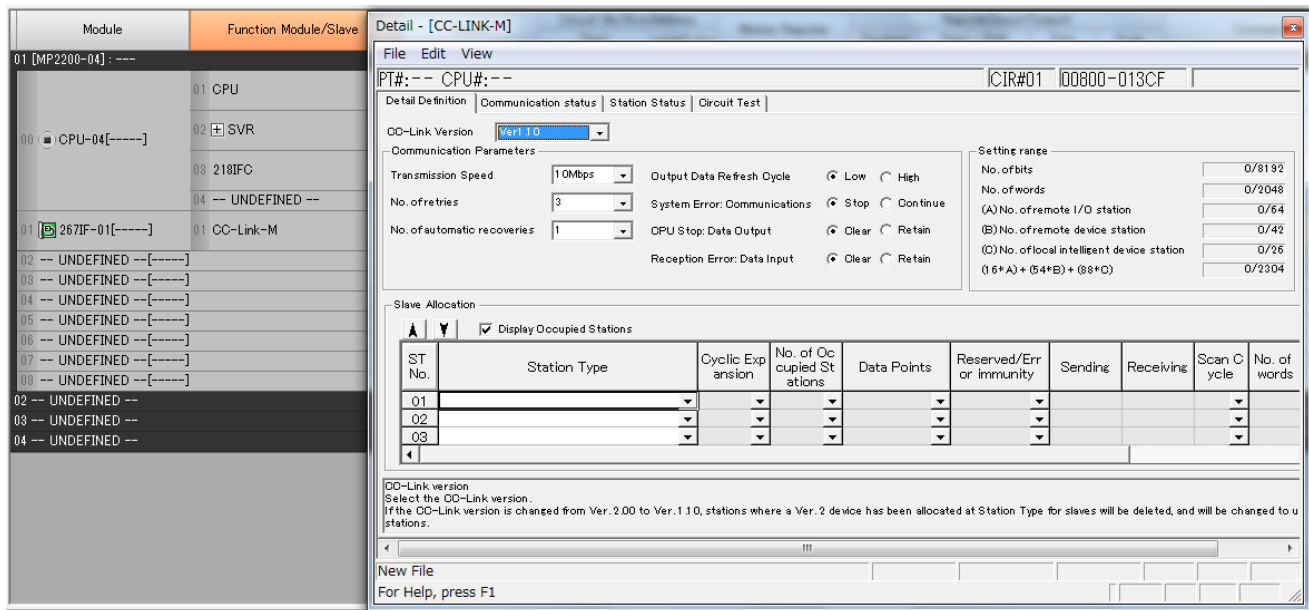
## 1.2 Past Upgrade Information

No.	Upgrade Information	Remarks
1	<a href="#">MPE720 version 7.11 upgrade information</a>	version 7.10→version 7.11
2	<a href="#">MPE720 version 7.13 upgrade information</a>	version 7.11→version 7.13
3	<a href="#">MPE720 version 7.14 upgrade information</a>	version 7.13→version 7.14
4	<a href="#">MPE720 version 7.20 upgrade information</a>	version 7.14→version 7.20
5	<a href="#">MPE720 version 7.21 upgrade information</a>	version 7.20→version 7.21
6	<a href="#">MPE720 version 7.23 upgrade information</a>	version 7.21→version 7.23

## 2. Description

### No. 1 267IF-01 (CC-Link Master) module was added.

267IF-01 (CC-Link Master) module was added to the option module with which MP2000 series can be equipped.



### 【Support Version】

#### Controller

Controller	Support Version
MP3200 Series	Unsupported (It is due to correspond by future upgrade.)
MP2000 Series	Ver2.86 or later

#### Option Module

Module	Support Version
267IF-01	Ver1.00 or later



以上内容仅为本文档的试下载部分，为可阅读页数的一半内容。如要下载或阅读全文，请访问：<https://d.book118.com/168121022044006106>