

20-JUL-2017

SBW-WBGs

1-10

A01**A01****GENERAL****Operational Hours**

ATS Hours / AD Operator Hours: 2200-1400

Airport Information

RFF: CAT 7
Fuel: 2200-1300
PCN: RWY 13/31: 61 F/C/X/T
Customs: 2200-1330

Operation**RWY Restriction**

Locked wheel turn on RWY 13/31 is prohibited.

TWY Restriction

TWY C width 15m / 49ft.

Taxi/Parking

APN restricted to code letter E ACFT (A330).

Visual Docking Guidance System (VDGS) AVBL at stands 2, 2A, 2B, 3, 3A and 3B.

Engine Run-up Areas

ENG test area located at stand 1 and 6.

Warnings

Do not overfly ammunition depot below 500ft. The depot is situated D3.7 on R328 from VSI VOR/DME.

DEPARTURE**Take-off Minima**

| RWY | | 13/31 | |
|----------|-----------|----------|---|
| All ACFT | ft - m/km | 0 - 400V | - |

Communication

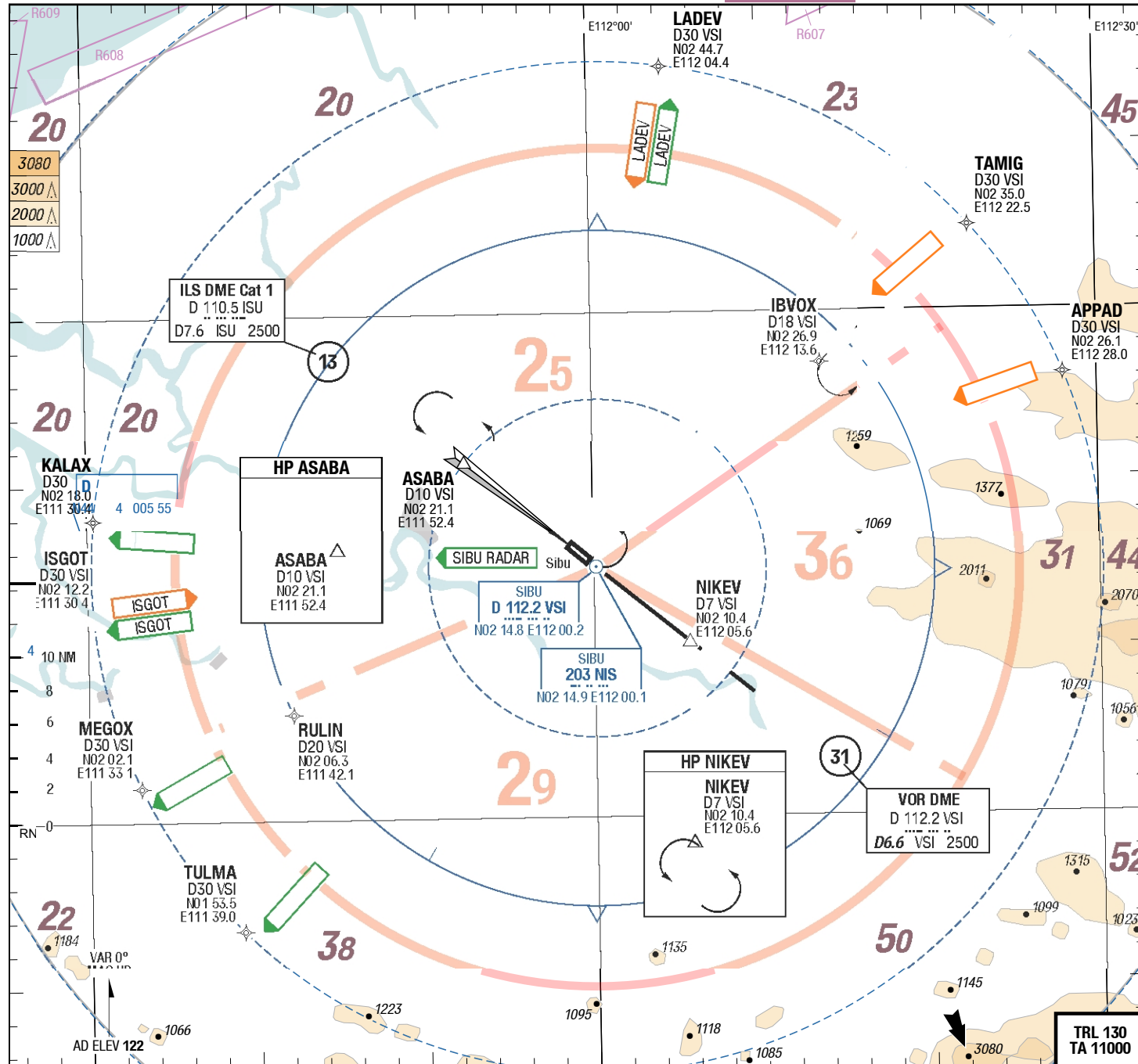
Contact director after airborne as soon as practicable before passing 2000ft on FREQ 122.600 and report:

- SID IDENT or assigned HDG.
- Last LVL vacated to the nearest 100ft and the assigned ALT.

Departure Procedure**Start-up/Push-back**

REQ ATC CLR from SIBU GND 5 min before ENG start-up.

2-10



| | | |
|-------------|---------|-----------|
| ATIS | 127.650 | 2200-1400 |
| DIR | 122.600 | 2200-1400 |
| | 124.400 | 2200-1400 |
| TWR | 123.200 | 2200-1400 |
| GND | 121.900 | 2200-1400 |

Landing RWY system:

13 2745 x 45 3.0° 60 HL

HL-P1 **THR 81** (3hPa) / TDZ 69 (---%) +0.4%

60 HL 45 x 2745 3.0° 420 **31**

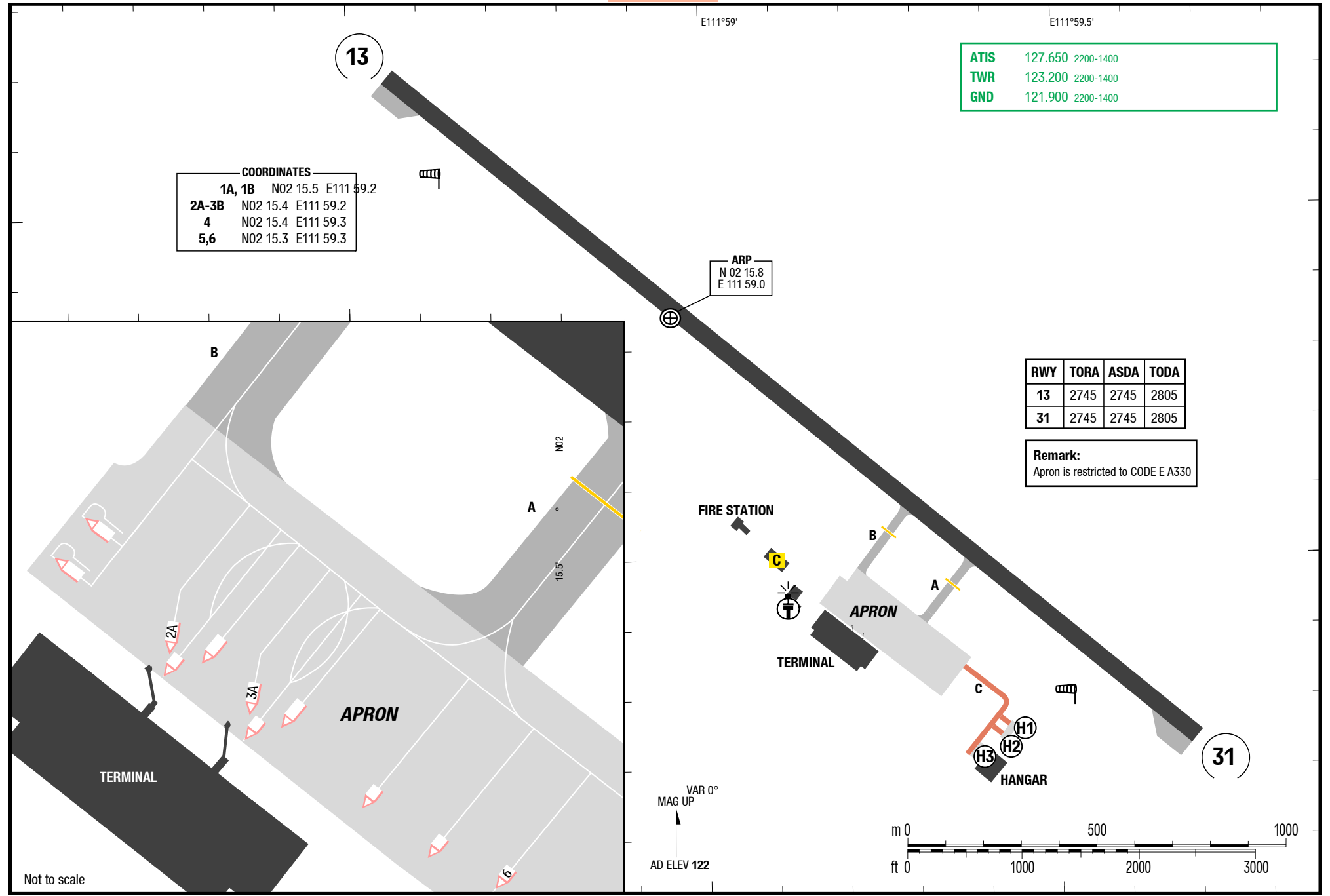
-0.4% TDZ 121 (---%) / **THR 121** (4hPa) HL-S

3-20

AGC

AGC
AGC

AGC



COORDINATES

| | | |
|--------|----------|-----------|
| 1A, 1B | N02 15.5 | E111 59.2 |
| 2A-3B | N02 15.4 | E111 59.2 |
| 4 | N02 15.4 | E111 59.3 |
| 5,6 | N02 15.3 | E111 59.3 |

| | | |
|------|---------|-----------|
| ATIS | 127.650 | 2200-1400 |
| TWR | 123.200 | 2200-1400 |
| GND | 121.900 | 2200-1400 |

ARP
N 02 15.8
E 111 59.0

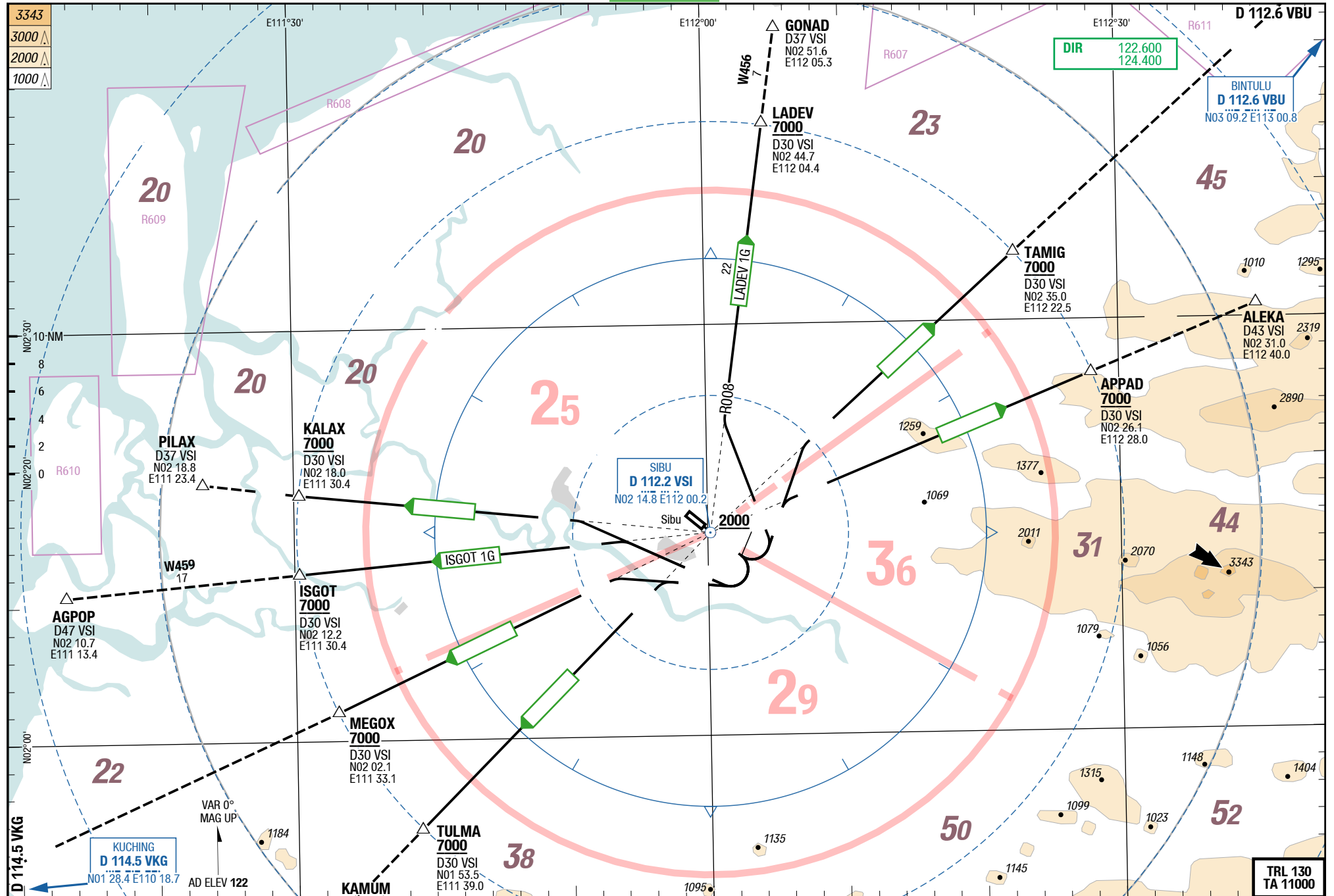
| RWY | TORA | ASDA | TODA |
|-----|------|------|------|
| 13 | 2745 | 2745 | 2805 |
| 31 | 2745 | 2745 | 2805 |

Remark:
Apron is restricted to CODE E A330

Not to scale

4-10

SIDs RWY 13

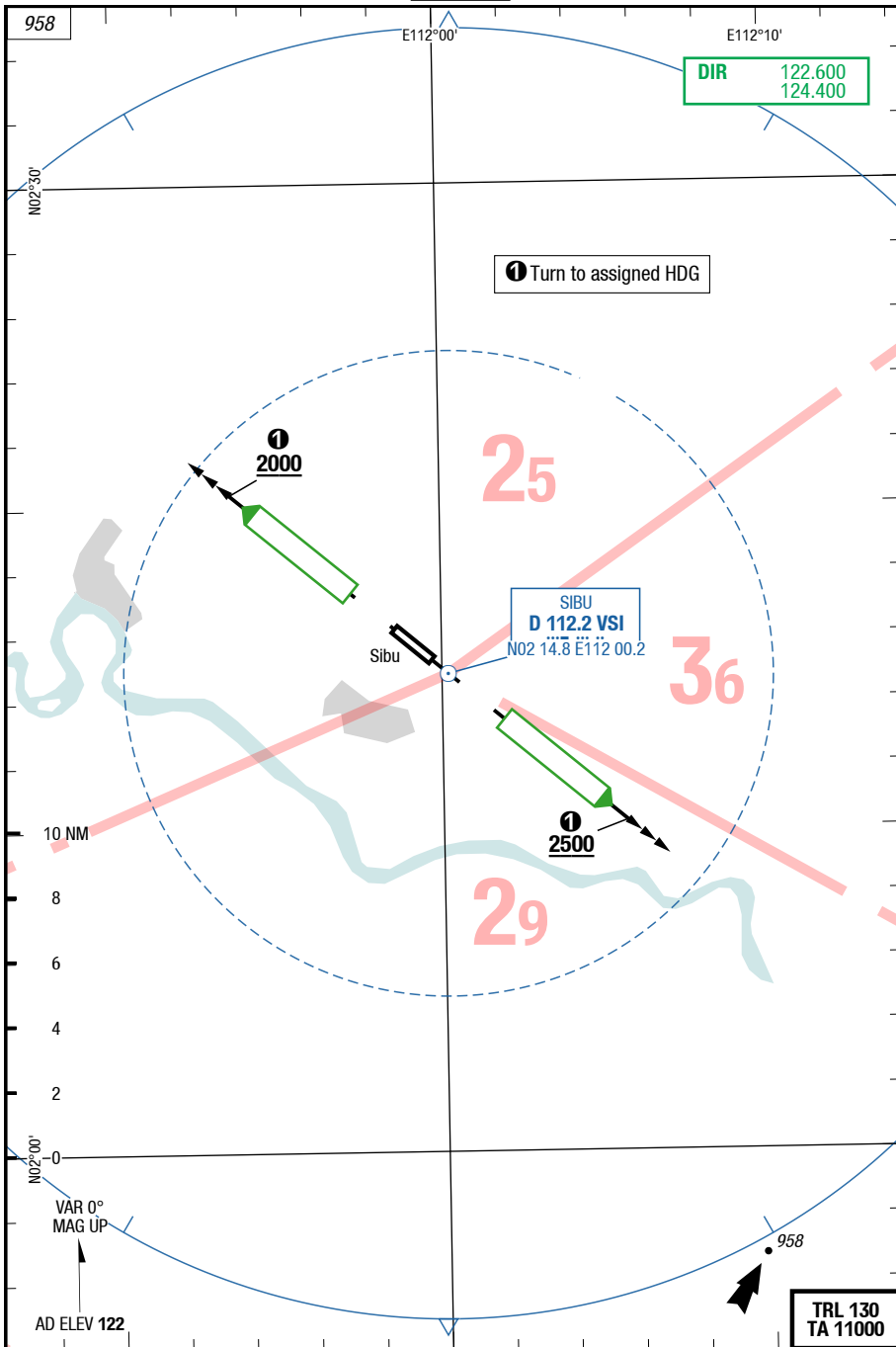


13-JUL-2017

SBW-WBGS

4-30

SIDs Sibu Radar One



Changes: Editorial

以上内容仅为本文档的试下载部分，为可阅读页数的一半内容。如要下载或阅读全文，请访问：<https://d.book118.com/196055035222010145>