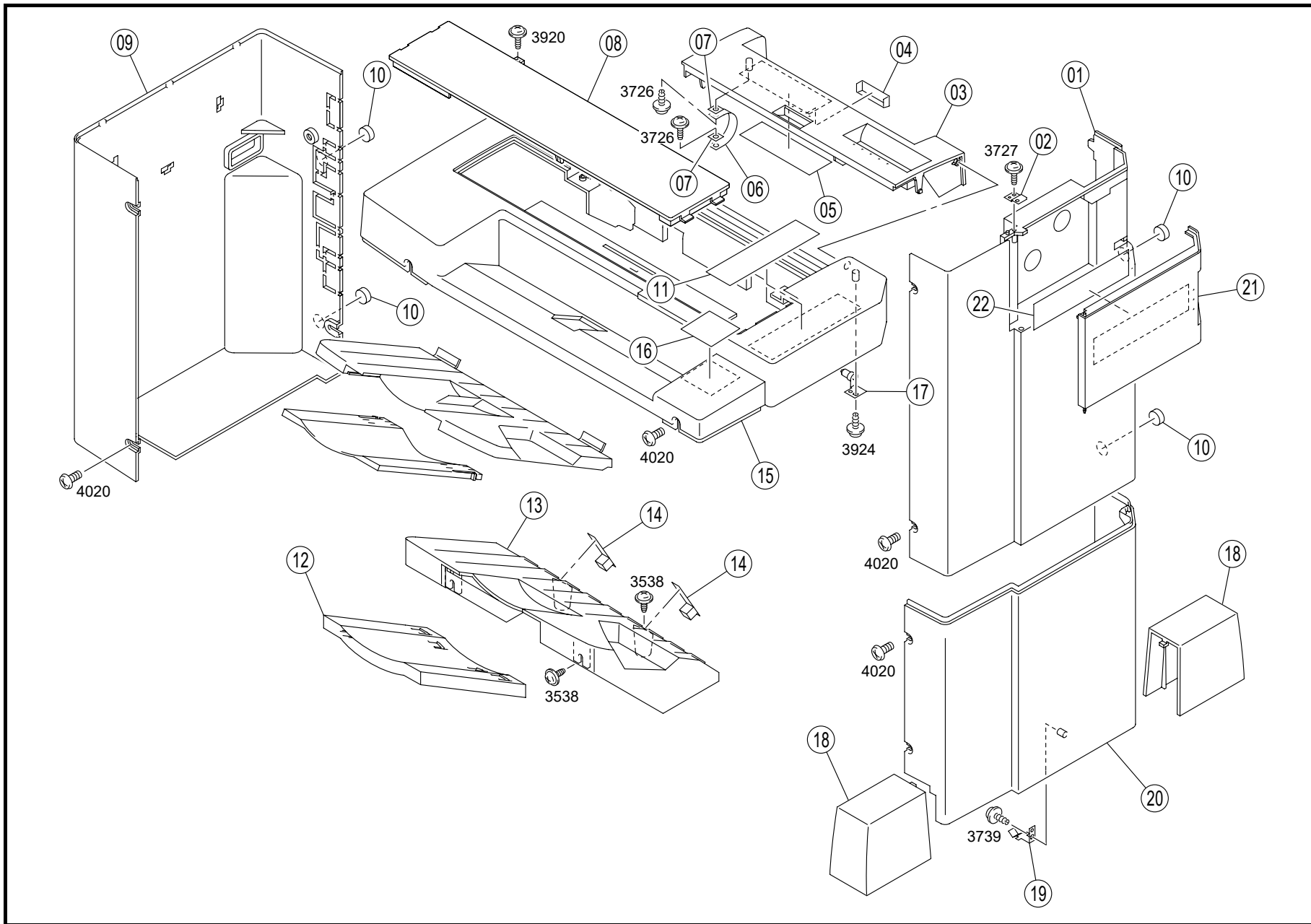


CONTENTS

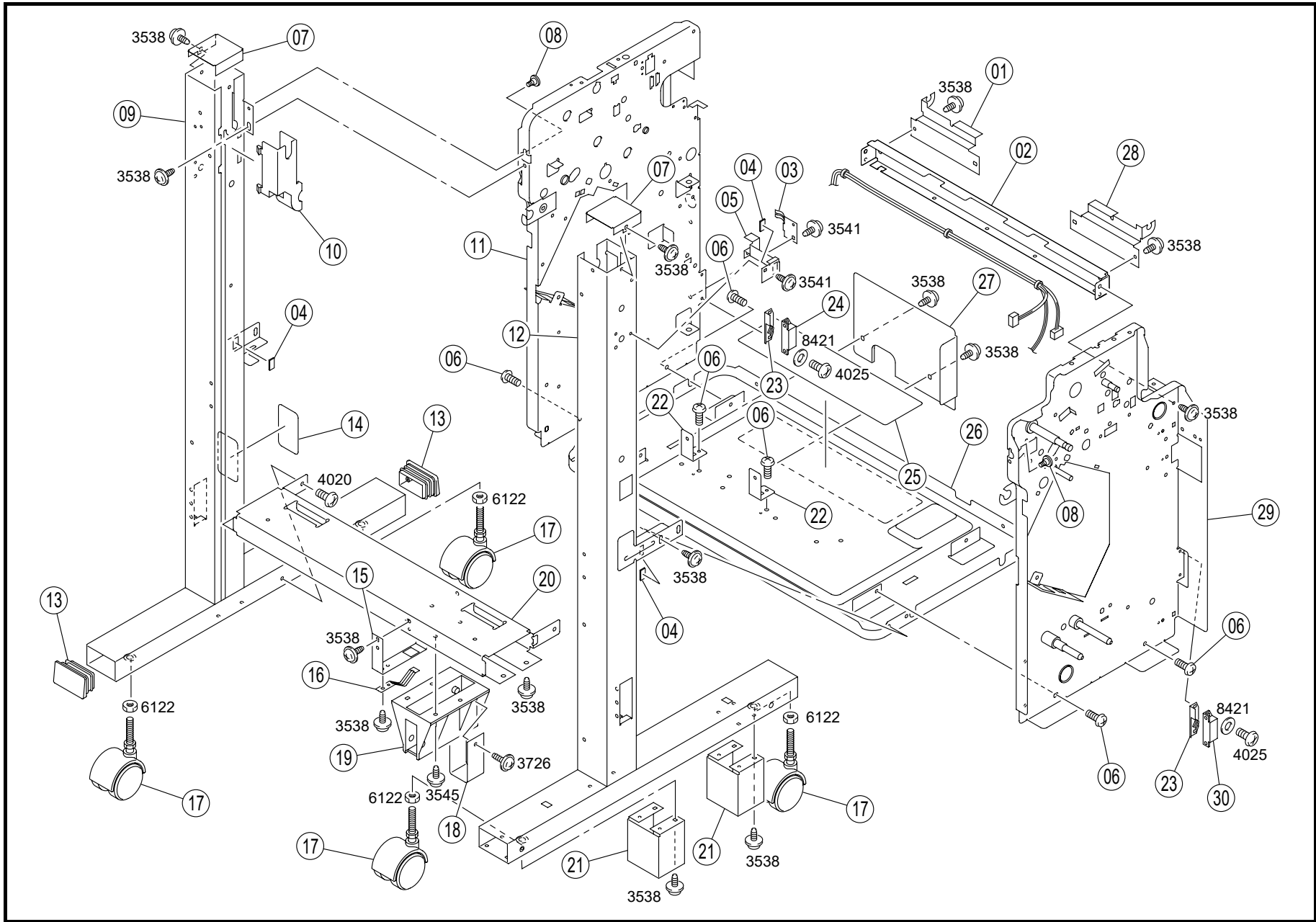
1.	HOUSING	1
2.	FRAMES (A).....	3
3.	FRAMES (B).....	5
4.	ELEVATOR DRIVE SECTION	7
5.	STAPLER UNIT.....	9
6.	FINISHER TRAY SECTION	11
7.	PAPER TRANSPORT SECTION (A)	13
8.	PAPER TRANSPORT SECTION (B)	15
9.	PAPER TRANSPORT SECTION (C)	17
10.	PAPER EXIT SECTION	19
11.	HORIZONTAL TRANSFER SECTION	21
12.	SHIFT DRIVE SECTION	23
13.	HORIZONTAL TRANSPORT UNIT	25
14.	ACCESSORY PARTS	27
15.	WIRE HARNESS SECTION (A)	29
16.	WIRE HARNESS SECTION (B)	31
17.	WIRE HARNESS SECTION (C)	33
18.	WIRE HARNESS SECTION (D)	35
19.	WIRING ACCESSORIES AND JIGS	37
20.	SCREWS AND WASHERS.....	39
21.	NUMERICAL INDEX	40

FEBRUARY 2004



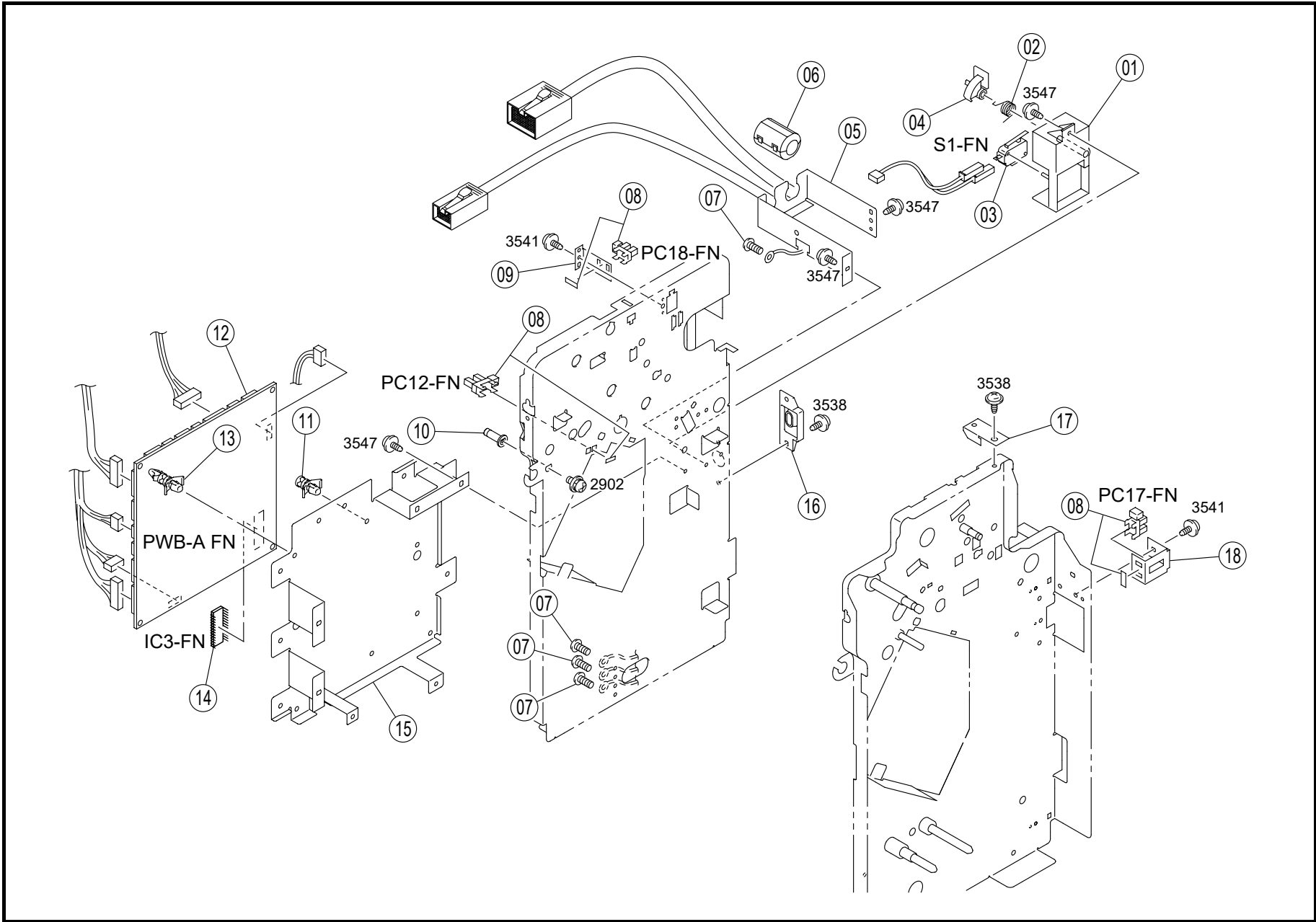
INDEX	PART NO.	PART NAME	REC	QTY	INDEX	PART NO.	PART NAME	REC	QTY
01	4643-1001-06	FRONT COVER		1	19	4643-1019-01 NS	PLATE SPRING		1
02	4643-1018-01 NS	BRACKET		1	20	4643-1011-02	COVER		1
03	4643-1004-05	COVER		1	21	4643-1010-04	FRONT COVER		1
04	4643-1021-01 NS	LID		1	22	4643-7302-01	LABEL JAM PROCESSING		1
05	4643-7301-01	LABEL JAM PROCESSING		1					
06	4643-1020-02	BAND		1					
07	1053-3103-01	SET PLATE		2					
08	4643-1005-02	TOP COVER		1					
09	4643-1002-05	REAR COVER		1					
10	4643-1009-02	STOPPER		4					
11	4684-7318-01	LABEL CAUTION		1					
12	4684-4304-01	TRAY		1					
13	4684-4303-01	TRAY		1					
14	4698-4310-01	GUIDE		2					
15	4643-1003-05	TOP COVER		1					
16	4684-7310-01	LABEL CAUTION		1					
17	4643-1017-02 NS	BRACKET		1					
18	4643-2009-02	GUIDE		2					

INDEX	PART NO.	PART NAME	REC	QTY	SFIX



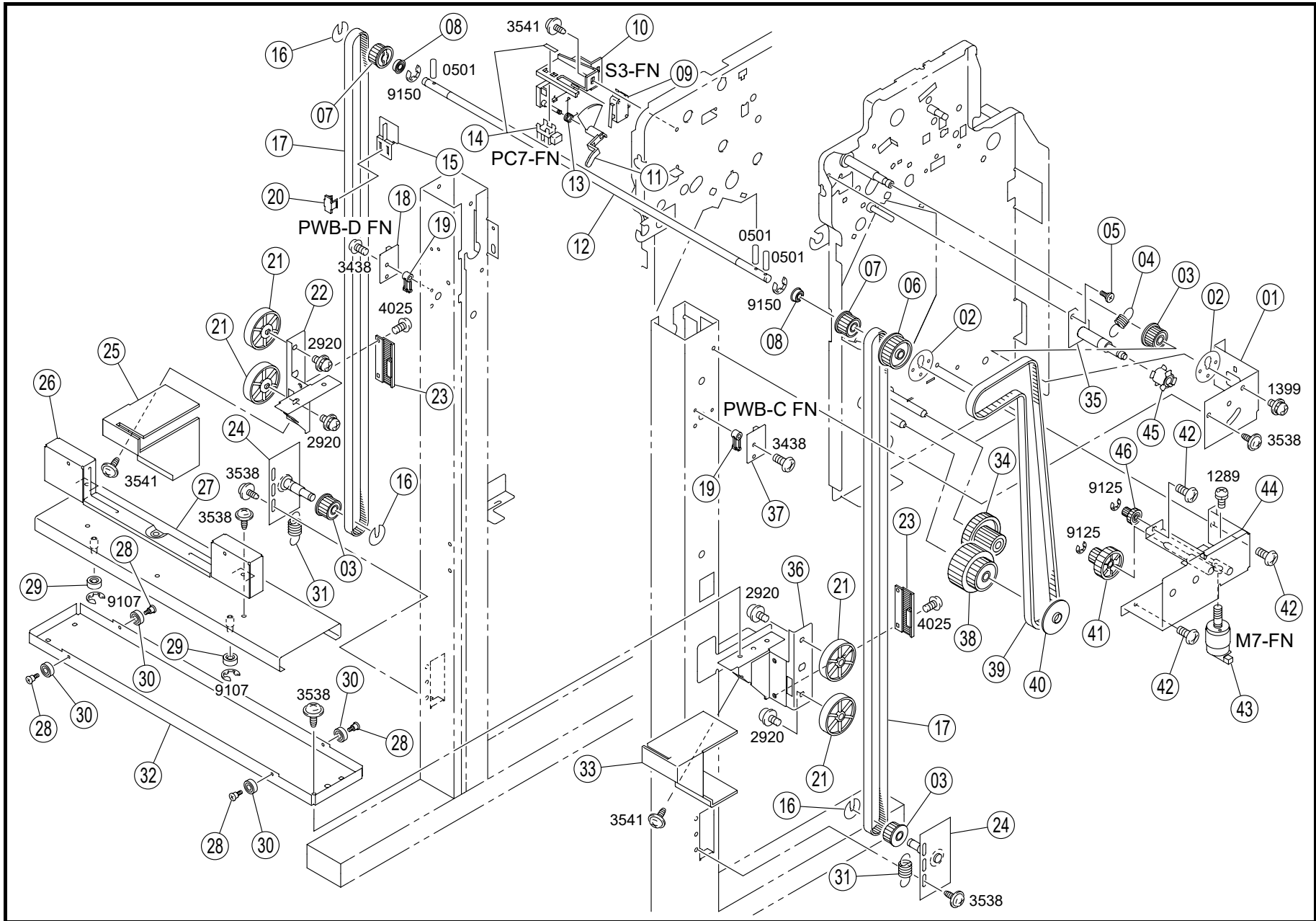
INDEX	PART NO.	PART NAME	REC	QTY	INDEX	PART NO.	PART NAME	REC	QTY
01	4683-2051-01	BRACKET		1	19	4643-2114-01	BRACKET		1
02	4643-4021-03	REINFORCE PLATE		1	20	4643-2003-03 NS	BRACKET		1
03	4683-2122-01 NS	PLATE SPRING		1	21	4643-2023-01 NS	REINFORCE PLATE		2
04	4643-4614-01	CUSHION		3	22	4644-2024-01 NS	BRACKET		2
05	4643-4613-01 NS	GUIDE PLATE		1	23	4493-2321-01	EARTH GROUND		2
06	4002-2581-01	SCREW		6	24	4425-3366-01	MAGNET CATCH		1
07	4643-2020-01	REINFORCE PLATE		2	25	4644-7303-01	LABEL STAPLE		1
08	1100-1340-09	SHOULDER SCREW		2	26	4684-2006-01 NS	BASE FRAME		1
09	4643-2002-05 NS	FRAME		1	27	4644-2025-01 NS	COVER		1
10	4643-1015-03	COVER		1	28	4683-2050-01	BRACKET		1
11	4643-0221-06 NS	FRAME ASSY		1	29	4644-0218-04 NS	FRAME ASSY		1
12	4643-2001-04 NS	FRAME		1	30	4425-3372-01	MAGNET CATCH		1
13	4643-2008-01	CAP		2					
14	4643-2130-01	FILM		1					
15	4643-2134-02 NS	BRACKET		1					
16	4643-2115-01	PLATE SPRING		1					
17	4643-2011-01	CASTOR		4					
18	4643-2129-01 NS	REINFORCE PLATE		1					

INDEX	PART NO.	PART NAME	REC	QTY	SFIX



INDEX	PART NO.	PART NAME	REC	QTY	INDEX	PART NO.	PART NAME	REC	QTY
01	4643-2111-03	BRACKET		1					
02	4643-2112-01	TORSION SPRING		1					
03	9331-2710-11	MICRO SWITCH		1					
04	4643-2119-02	ACTUATOR		1					
05	4643-2113-01	NS BRACKET		1					
06	9326-1810-11	FERRITE CORE		1					
07	4002-2581-01	SCREW		4					
08	4122-0901-01	PHOTO INTERRUPTER		3					
09	4643-1007-01	NS BRACKET		1					
10	4643-5012-01	SHOULDER SCREW		1					
11	9384-1621-21	PWB SUPPORT 6.4H		5					
12	4644-0101-03	PWB ASSY	RP	1					
13	9384-1900-56	PWB SUPPORT 6.35H		4					
14	4684-6602-02	IC		1					
15	4643-2014-03	NS BRACKET		1					
16	4643-2131-02	GUIDE		1					
17	4643-1012-01	NS BRACKET		1					
18	4643-2010-01	NS BRACKET		1					

INDEX	PART NO.	PART NAME	REC	QTY	SFIX



INDEX	PART NO.	PART NAME	REC	QTY	INDEX	PART NO.	PART NAME	REC	QTY
01	4643-4524-02 NS	REINFORCE PLATE		1	24	4643-0201-02 NS	BRACKET ASSY		2
02	4643-4416-01	FLANGE		2	25	4684-4614-01 NS	COVER		1
03	4643-4404-01	PULLEY Z=24		3	26	4643-4615-02 NS	BRACKET		1
04	4643-4525-01	TENSION SPRING		1	27	4643-0224-01 NS	BRACKET ASSY		1
05	1100-1340-09	SHOULDER SCREW		1	28	4643-4605-01	SHOULDER SCREW		1
06	4643-4516-02	PULLEY Z=36		1	29	4643-4604-01	ROLL		2
07	4643-4402-02	PULLEY Z=24		2	30	1300-4322-01	BALL BEARING		1
08	1300-4342-07	BALL BEARING		2	31	4643-4413-01	TENSION SPRING		2
09	9331-2310-11	MICROSWITCH ELEVATOR L (S3-FN)		1	32	4643-4601-03 NS	BRACKET		1
10	4643-4803-02 NS	HOLDER		1	33	4684-4613-01 NS	COVER		1
11	4643-4801-02	ACTUATOR		1	34	4644-4532-01	GEAR Z=21/45		1
12	4643-4403-02 NS	SHAFT		1	35	4643-0203-01 NS	BRACKET ASSY		1
13	4643-4802-01	TORSION SPRING		1	36	4643-4602-03 NS	BRACKET		1
14	4122-0901-01	PHOTO INTERRUPTER FULL (PC7-FN)		1	37	4611-6053-01	PW BOARD LED (PWB-C FN)		1
15	4643-4804-02 NS	LEVER		1	38	4644-4531-01	GEAR Z=36/45		1
16	4643-4412-01	FLANGE		3	39	4643-4515-01	TIMING BELT L=858		1
17	4643-4401-01	TIMING BELT L=1299		2	40	4643-4527-01	FLANGE		1
18	4611-6054-01	PW BOARD PQ (PWB-D FN)		1	41	4644-4533-01	GEAR Z=14/63		1
19	4643-4806-01	GUIDE		2	42	4002-2581-01	SCREW		3
20	4643-4805-01	HOLDER		1	43	4644-0751-01	MOTOR ASSY ELEVATOR (M7-FN)		1
21	4643-0760-01	ROLL ASSY		4	44	4644-0211-01 NS	BASE FRAME ASSY		1
22	4643-4603-02 NS	BRACKET		1	45	4643-4521-01	PULLEY		1
23	4643-4407-02 NS	BRACKET		2	46	4470-4191-01	GEAR Z=16/20		1

INDEX	PART NO.	PART NAME	REC	QTY	SFIX

以上内容仅为本文档的试下载部分，为可阅读页数的一半内容。如要下载或阅读全文，请访问：<https://d.book118.com/215314304322011302>