

Question No : 1 确认

When migrating a Windows vCenter Server 6.0 to the vCenter Server Appliance 6.5, which

two will be migrated by default? (Choose two.)

- A. Local Windows OS users and groups
- B. Configuration
- C. Custom ports
- D. FQDN
- E. Historical and Performance data

Commented [FL1]: BD

Question No : 2 确认

Which is the block size on the VMFS6 datastore?

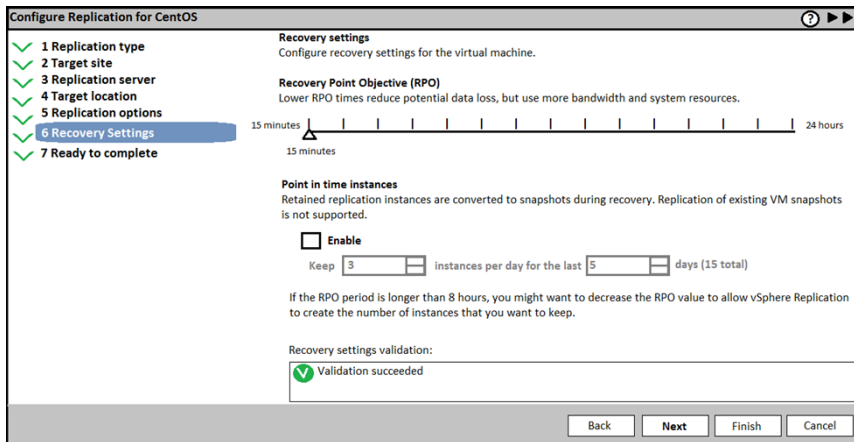
- A. All small and large file blocks are 8MB.
- B. All small and large file blocks are 1MB.
- C. Small file blocks are 512KB. large file blocks are 64MB.
- D. Small file blocks are 1MB, large file blocks are 512MB.

Commented [FL2]: D

Question No : 3 确认

A vSphere Administrator is in the process of configuring replication for a virtual machine, but is not able to select the Recovery Point Objective (RPO) value of 5 minutes. Which statement could explain why the RPO value cannot be lower than 15 minutes?

Commented [FL3]: A



- A. The OS quiescing option is selected for Replication options.
- B. The virtual machine hardware version is not compatible.
- C. The target and source sites use different types of datastores.
- D. The target and source sites are not using VMFS 6.0 datastore.

Commented [FL4]: C

Question No : 4 确认

What VM Monitoring setting would ensure that the failure interval for a virtual machine is defined as 120 seconds?

- A. High
- B. Normal
- C. Low
- D. Medium

Commented [FL5]: A

Question No : 5 确认

The storage vendor recommends adjusting the Fibre Channel HBA queue depth to resolve a performance problem.

Which esxcli namespace can a vSphere Administrator use to adjust the queue depth?

- A. esxcli system module parameters
- B. esxcli storage core device
- C. esxcli system module set
- D. esxcli storage core adapter

Question No : 6 确认

An administrator sees the following error in the log files:

```
Lost access to volume 496befed-1c79c817-6beb-001ec9b60619 (san-lun-100) due to connectivity issues.
```

Which two events could be the source of the error message? (Choose two.)

- A. vCenter Server failure
- B. VXLAN failure
- C. Disk array failure
- D. Network failure
- E. ESXi host failure

Question No : 7 确认

Which two statements are true for Predictive DRS? (Choose two.)

- A. It balances resource utilization for virtual machines with unpredictable utilization patterns.

Commented [FL6]: CD

Commented [FL7]: BC

- B. It integrates DRS with vRealize Operations Manager to balance workloads for virtual machines before resource utilization spikes occur.
- C. It balances resource utilization based on a threshold's algorithm that runs each night.
- D. It determines the best placement and balance of virtual machines based on a threshold's algorithm that runs each night in vCenter Server 6.5 Database.

Question No : 8 确认

Commented [FL8]: BDE

What are three benefits of using a few large-capacity LUNs instead of many small-capacity

LUNs? (Choose three.)

- A. Better performance because there is less contention for a single volume.
- B. More flexibility for resizing virtual disks.
- C. Less wasted storage space.
- D. More flexibility to create virtual machines without adding new LUNs.
- E. Fewer VMFS datastores to manage.

Question No : 9 确认

Commented [FL9]: A

Which statement applies to the vSphere Replication appliance?

- A. Only one vSphere Replication appliance can be deployed per vCenter Server instance.
- B. VMware Tools in the vSphere Replication appliance can be upgraded.
- C. A single vSphere Replication appliance can manage a maximum of 4000 replications.

D. vSphere Replication is available only with the vSphere Essentials Plus license.

Question No : 10 确认

Commented [FL10]: C

Which method is supported for backing up the virtual machine that contains vCenter

Server?

- A. differential
- B. incremental
- C. full image
- D. individual disks

Question No : 11 确认

Commented [FL11]: B

A vSphere administrator manages a cluster which includes critical and non-critical virtual machines. The cluster requires different permissions for contractors and non-contractors.

How can the administrator exclude the contractor group from some of the critical VMs?

- A. Apply permission for both contractors and non-contractors on the cluster level.
- B. Apply permission for both contractors and non-contractors on the cluster level. Remove permission on the critical VMs for contractors.
- C. Remove permission for contractors on the cluster level. Apply permission on the critical VMs for non-contractors.
- D. Apply permission for both contractors and non-contractors on the VMs. Remove permission on the critical VMs for contractors.

Question No : 12 确认

When will vSphere Data Protection delete the expired backup image of a Platform Service

- A. Immediately after the retention period has expired.
- B. After the expired backup image is restored.
- C. During the next backup window following expiry.
- D. During the next maintenance window following expiry.

Commented [FL12]: D

Question No : 13 确认

Which statement is correct when migrating from a Windows vCenter Server to the vCenter

ServerAppliance 6.5?

- A. Migration deployments do not migrate local OS users from the source vCenter Server.
- B. Migration deployments support DHCP on the source vCenter Server.
- C. Migration deployments allow the source vCenter Server to remain powered on afterwards.
- D. Migration deployments support custom ports for all services on the source vCenter Server.

Commented [FL13]: A

Question No : 14 确认

Which is required for configuring iSCSI Software Adapter network port binding?

Commented [FL14]: D

A. VMkernel of the iSCSI traffic must be load balanced using Route based on IP Hash algorithm.

B. VMkernel of the iSCSI traffic must be load balanced using Route based on Source Virtual Port ID algorithm.

C. VMkernel of the iSCSI traffic must be load balanced using Route based on Source MAC Hash algorithm.

D. VMkernel of the iSCSI traffic must be bound to only one active network adapter.

Question No : 15 确认

Commented [FL15]: AC

Which two tasks should a vSphere administrator perform if the vmkernel log reports VMFS

metadata errors? (Choose two.)

A. contact VMware technical support

B. reformat the datastore

C. check the device with VOMA

D. ignore the messages

Question No : 16 确认

Commented [FL16]: CD

Which two permissions are required to migrate a virtual machine with Storage vMotion?

(Choose two.)

- A. Network > Move Network
- B. Virtual Machine > Inventory > Move
- C. Resource > Migrate powered on virtual machine
- D. Datastore > Allocate Space

Question No : 17 确认

Commented [FL17]: B

A vSphere Administrator wants to reserve 0.5 Gbps for virtual machines on each uplink on

a disturbed switch that has 10 uplinks.

What is the quota that should be reserved for the network resource pool?

- A. 10 Gbps
- B. 5 Gbps
- C. 100 Gbps
- D. 0.5 Gbps

Question No : 18 确认

Commented [FL18]: A

Which is the correct order for upgrading vSphere components?

- A. vCenter Server, ESXi hosts, VMware Tools, Virtual Machine hardware
- B. VMware Tools, Virtual Machine hardware, ESXi hosts, vCenter Server
- C. vCenter Server, Virtual Machine hardware, VMware tools, ESXi hosts

D. ESXi hosts, vCenter Server, Virtual Machine hardware, VMware Tools

Question No : 19 确认

Commented [FL19]: BD

A vSphere Administrator observes that the Primary VM configured with Fault Tolerance is executing slowly. After further investigation, it is determined that the Secondary VM is on an overcommitted ESXi host.

What two methods will correct the problem? (Choose two.)

- A. Use Storage vMotion to migrate the Secondary VM to another datastore.
- B. Use vMotion to migrate the Secondary VM to a different ESXi host.
- C. Configure a CPU limit on the Primary VM which will also apply to the Secondary VM.
- D. Turn off and turn on FT in order to recreate the Secondary VM on a different datastore.

Question No : 20

Commented [FL20]: CD

What are two reasons why a datastore in a Storage DRS cluster cannot enter maintenance

mode? (Choose two.)

- A. Storage latency is too high to allow Storage DRS initiate Storage vMotion.
- B. Storage DRS is configured for a VMFS3 datastore.
- C. Storage DRS is disabled on the virtual disk.
- D. Rules prevent Storage DRS from making migration recommendations.

Question No : 21 确认

Commented [FL21]: D

vCenter Server Appliance Instance can be backed up using which Client Interface?

- A. vSphere Client Interface
- B. vSphere Web Client Interface
- C. VMware Host Client Interface
- D. Virtual Appliance Management Interface

Question No : 22 确认

Commented [FL22]: A

An administrator must change the statistics level for short-term performance monitoring and wants to collect metrics for all counters, excluding minimum and maximum rollup values.

What would be the statistics level?

- A. Level 3
- B. Level 1
- C. Level 2
- D. Level 4

Question No : 23 确认

Commented [FL23]: AB

A vSphere Administrator attempts to enable Fault Tolerance for a virtual machine but receives the following error:

Secondary VM could not be powered on as there are no compatible hosts that can accommodate it.

What two options could cause this error? (Choose two.)

- A. The other ESXi host(s) are in Maintenance Mode.
- B. Hardware virtualization is not enabled on the other ESXi host(s).
- C. The other ESXi host(s) are in Quarantine Mode.
- D. Hardware MMU is enabled on the other ESXi host(s).

Question No : 24 确认

Which feature facilitates the sharing of templates via vCenter Server?

- A. Content Library
- B. OVF
- C. folders
- D. vApp

Question No : 25 确认

What counter should an administrator check to determine if a virtual machine is

Commented [FL24]: A

Commented [FL25]: D

ballooning?

- A. swapinRate
- B. vmmemctltarget
- C. swapped
- D. vmmemctl

Question No : 26

Which two statements are true about Highly Available vSphere Auto Deploy infrastructure?

(Choose two.)

- A. It helps prevent data loss.
- B. It is a prerequisite for using vSphere Auto Deploy with stateful install.
- C. It requires two or more Auto Deploy servers.
- D. It is a prerequisite for using vSphere Auto Deploy with stateless caching.

Commented [FL26]: AD

Question No : 27 确认

Which iSCSI initiator type can be used with any network interface card?

- A. Software iSCSI initiator
- B. Software FCoE adapter
- C. Hardware Independent iSCSI initiator
- D. Hardware Dependent iSCSI initiator

Commented [FL27]: A

Question No : 28 确认

What is the correct way to replace the certificate on an existing vCenter Server that is

Commented [FL28]: C

part

of a vCenter HA configuration?

- A. Put the vCenter HA in Maintenance mode, replace the certificate, exit Maintenance mode.
- B. Shut down Passive and Witness nodes and replace the certificate on the Active node.
- C. Remove the Passive and Witness nodes, replace the certificate, reconfigure the cluster.
- D. Replace the certificate while all nodes are participating in the cluster.

Question No : 29 确认

Commented [FL29]: BCD

Which three storage protocols are supported by Virtual Volumes? (Choose three.)

- A. FCIP
- B. FCoE
- C. iSCSI
- D. NFS v3
- E. NFS v4

Question No : 30 确认

Commented [FL30]: D

The administrator must back up a vCenter HA deployment.

Which component must be backed up?

- A. Passive node
- B. Witness node
- C. External database

D. Active node

Question No : 31

Commented [FL31]: BCE

Which three types of Content Libraries exist within vSphere 6.5? (Choose three.)

- A. Remote Content Library
- B. Published Content Library
- C. Local Content Library
- D. Shared Content Library
- E. Subscribed Content Library

Question No : 32 确认

Commented [FL32]: BC

Which two storage configurations on the source server are unsupported with VMware Converter? (Choose two.)

- A. Linux LVM
- B. software RAID
- C. GPT/MBR hybrid disks
- D. Windows basic volumes
- E. Windows dynamic volumes

Question No : 33 确认

Commented [FL33]: BD

A security officer has issued a new directive that users will no longer have access to change connected network adapters to limit denial of service on a virtual machine.

Which two correct virtual machine advanced configuration parameters will accomplish this?

(Choose two.)

- A. isolation.device.edit.disable = "FALSE"
- B. isolation.device.edit.disable = "TRUE"
- C. isolation.device.connectable.disable = "FALSE"
- D. isolation.device.connectable.disable = "TRUE"

Question No : 34 确认

Commented [FL34]: ABD

A user is given the "Virtual machine user (sample)" role in a vSphere 6.x environment.

Which three permissions would the user be able to perform? (Choose three.)

- A. Reset a virtual machine.
- B. Power on a virtual machine.
- C. Move a host into a cluster.
- D. Configure CD media.
- E. Migrate a virtual machine with Storage vMotion.

Question No : 35 确认

Commented [FL35]: C

An administrator is trying to set up Host Partial Failure Response, but the Automated option is grayed out.

What can the administrator change to enable the Automated option?

- A. Change the vSphere DRS Automation level to Partially Automated.
- B. Change the vSphere DRS Automation level to Fully Automated.
- C. Enable vSphere HA Host Monitoring.
- D. Change the vSphere DPM Automation level to Automatic.

Question No : 36 确认

Commented [FL36]: AC

Which two components are part of storage I/O multipathing on ESXi? (Choose two.)

- A. SATP
- B. VASA
- C. PSP
- D. VAAI

Question No : 37 确认

Commented [FL37]: C

Which metric in the Exhibit would identify high latency for a storage device?


```
6:16:06 pm up 77 days 19:07, 817 worlds, 15 VMs, 30 vCPUs; CPU load average: 0.06, 0.07, 0.07
```

ADAPTR PATH	NPTH	CMDS/s	READS/s	WRITES/s	MBREAD/s	MBWRTN/s	DAVG/cmd	KAVG/cmd	GAVG/cmd	QAVG/cmd
vmhba0 -	1	0.76	0.19	0.57	0.00	0.00	0.08	0.01	0.09	0.00
vmhba1 -	0	0.00	0.00	0.00	0.00	0.00	0.00	0.00	0.00	0.00
vmhba2 -	0	0.00	0.00	0.00	0.00	0.00	0.00	0.00	0.00	0.00
vmhba32 -	0	0.00	0.00	0.00	0.00	0.00	0.00	0.00	0.00	0.00
vmhba33 -	0	0.00	0.00	0.00	0.00	0.00	0.00	0.00	0.00	0.00
vmhba34 -	0	0.00	0.00	0.00	0.00	0.00	0.00	0.00	0.00	0.00
vmhba35 -	0	0.00	0.00	0.00	0.00	0.00	0.00	0.00	0.00	0.00
vmhba36 -	0	0.00	0.00	0.00	0.00	0.00	0.00	0.00	0.00	0.00
vmhba37 -	0	0.00	0.00	0.00	0.00	0.00	0.00	0.00	0.00	0.00
vmhba38 -	0	0.00	0.00	0.00	0.00	0.00	0.00	0.00	0.00	0.00
vmhba39 -	1	0.00	0.00	0.00	0.00	0.00	0.00	0.00	0.00	0.00
vmhba40 -	12	52.64	1.34	49.78	0.00	1.72	3.91	0.01	3.92	0.00

- A. QAVG/cmd
- B. KAVG/cmd
- C. DAVG/cmd
- D. GAVG/cmd

Commented [FL38]: C

Question No : 38 确认

What is the minimum number of hosts that must contribute capacity to a non-ROBO single site VMware vSAN cluster?

- A. 1
- B. 64
- C. 3
- D. 2

Commented [FL39]: BDE

Question No : 39 确认

An administrator wants to enable proactive HA by moving virtual machines automatically if a hardware alert is triggered. What are the three required settings? (Choose three.)

以上内容仅为本文档的试下载部分，为可阅读页数的一半内容。如要下载或阅读全文，请访问：

<https://d.book118.com/526222110210010150>