

ASAHI SEIKO USA, Inc.

Card Dispenser

Technical Manual



CD-200
CD-1000
CD-1100
CD-1300



This document is the private unpublished property of Asahi Seiko USA Inc. and may not be reproduced in whole or in part by any means, electronic or otherwise, without the written authorization of Asahi Seiko USA Inc. Asahi Seiko USA Inc. does not accept liability for any errors or omissions contained within this document. Asahi Seiko USA Inc. shall not incur any penalties arising out of the adherence to, interpretation of, or reliance on, this standard. Asahi Seiko USA Inc. reserves the right to amend, improve or change the product referred to within this document or the document itself at any time.

Contents

1. Document Control.....	4
2. General Description.....	5
3. Electrical Interface.....	6
3.1 Interface Connector	
3.2 Wiring Guide	
3.3 Timing Charts	
3.4 Operation Flow Chart	
3.5 Signal Characteristics	
4. DIP Switch Setting	13
5. Card Thickness Adjustment Procedure.....	14
5.1 Required Tools & Supplies	
5.2 Thickness Adjustment	
5.2.1 Guide Bracket	
5.2.2 Tension Lever	
5.2.3 Adjust Plate	
5.2.4 Opening the Shutter	
5.2.5 Adjusting the Reverse Roller	
5.2.6 Guide Bracket	
5.2.7 Tension Lever	
5.2.8 Replacing the Shutter	
6. Maintenance.....	19
7. General Specifications.....	20
7.1 Card Dispenser	
7.2 PCB Identification	
7.3 Motor Specifications	
7.3.1 12VDC Motor	
7.3.2 24VDC Motor	
8. Exploded View Drawing.....	25
8.1 CD-200	
8.2 CD-200 Parts List	
8.3 CD-1000, CD-1100, CD-1300	

8.4	CD-1000, CD-1100, CD-1300 Parts List	
8.5	CD-1100 Parts List	
8.6	CD-1300 Parts List	
8.7	CD-1000, CD-1300 Cassette	
8.8	CD-1000, CD-1300 Cassette Parts List	
8.9	CD-1100 Cassette & Parts List	
9.	External Dimensions.....	39
9.1	CD-200	
9.2	CD-1000	
9.3	CD-1100	
9.4	CD-1300	

1.0 Document Control

Date	Issue No.	Reason for Revision	Page No.
7/14/04	Draft	----	-----
9/24/04	1.0	Release	

2.0 General Description

The card dispensers developed by Asahi Seiko ensure accurate card-dispensing by utilizing a patented clutch and reverse-rotating roller system for smooth card feeding that prevents double dispensing or wrong dispensing.

Our card dispensers can respond to cards ranging from 0.010” to 0.034” in thickness (JIS-II or ISO standards, no embossed surfaces). This series is for prepaid cards, credit cards, debit cards, magnetic stripe cards, smart cards, paper cards, sports cards, break open tickets and so forth.

The electrical interface with your machine can be easily accomplished with our exclusive control board (PCB). This PCB is attached to the underside of the unit, thus eliminating the need for further design of circuit boards.

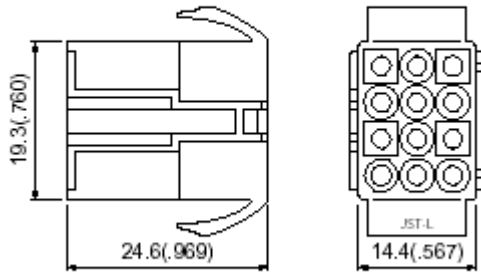
Our control PCB is designed to automatically reverse if a card is not completely dispensed within 4 seconds. It will automatically repeat this motion, until a single card is dispensed or the pre-set number of re-tries has been reached. The number of times in which this action is repeated can be pre-set with the DIP switches located on the PCB.

3.0 Electrical Interface

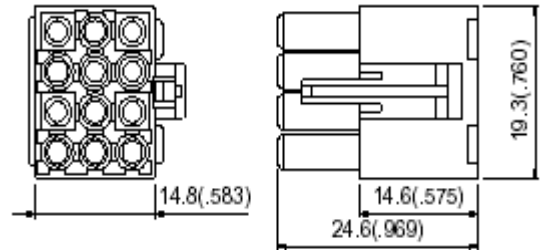
3.1 Interface Connector

This series of card dispenser is equipped with the JST ELP-12V series connector. The mating connector, ELR-12V, and contacts are available as an option and can be ordered through Asahi Seiko or by contacting JST or a JST stocking distributor.

ELR-12V



ELP-12V



The Asahi Seiko part numbers for the ELR-12V connector and contacts are:

ELR-12V Connector

CMA-8007

Contacts for ELR-12V

CDS204P010071

ELR-12V Connector with 12" wire

ECM-8010

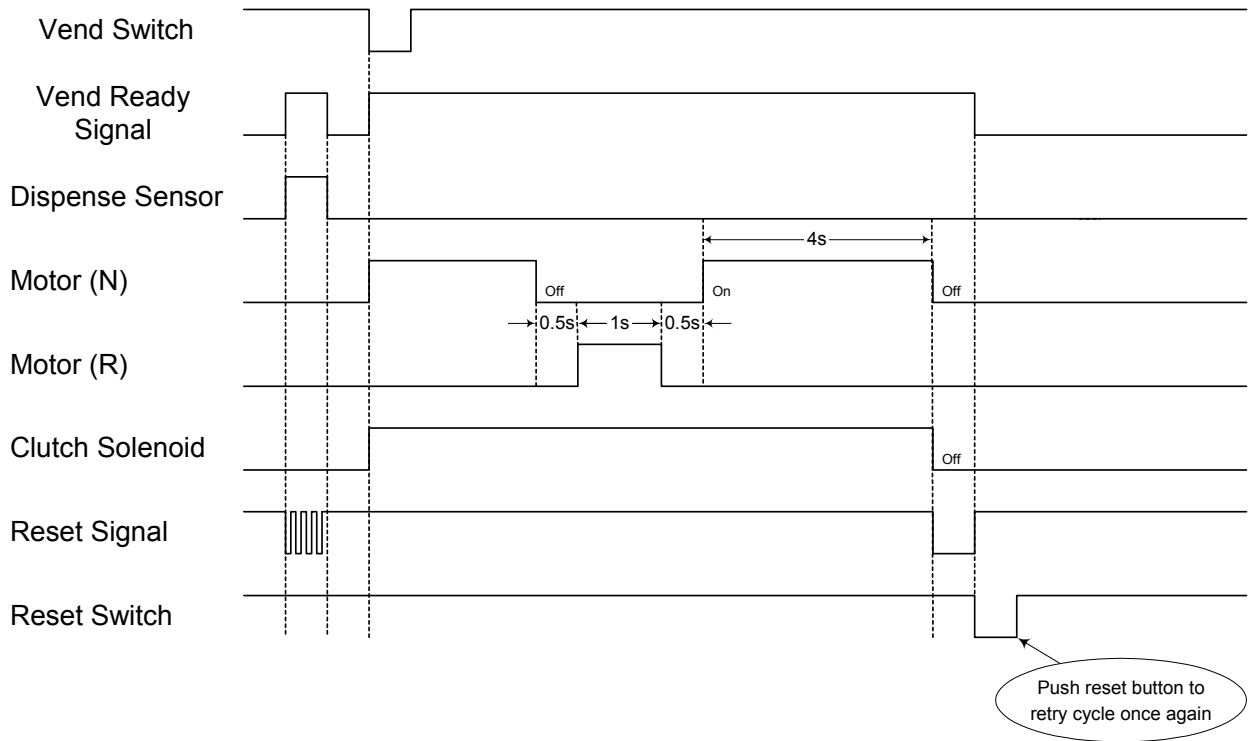
3.2 Wiring Guide

Pin Location	Wire Color	12VDC Connections	24VDC Connections	Operations Guide
1	BLACK	0V	0V	Source Voltage
2	RED	12VDC	24VDC	
VEND SWITCH				
3	BLACK	COMMON	COMMON	30ms or longer switch closure to vend card
4	BROWN	NORMALLY OPEN	NORMALLY OPEN	
READY-TO-VEND SIGNAL				
5	ORANGE	LIT BUTTON / LAMP	LIT BUTTON / LAMP	Enables a lamp to be lit when unit is ready to dispense cards
6	YELLOW	5VDC	5VDC	
RESET SWITCH				
7	GREEN	NORMALLY OPEN	NORMALLY OPEN	
8	BLACK	COMMON	COMMON	
RESET & JAM SIGNAL				
9	BLUE	LIT BUTTON / LAMP	LIT BUTTON / LAMP	Enables a lamp to be lit when card has not been dispensed. If a card jams, or fraud is experienced, a flashing output will occur.
10	YELLOW	5VDC	5VDC	
DISPENSER EMPTY SIGNAL				
11	GRAY	LIT BUTTON / LAMP	LIT BUTTON / LAMP	Enables a lamp to be lit when unit is empty
12	YELLOW	5VDC	5VDC	

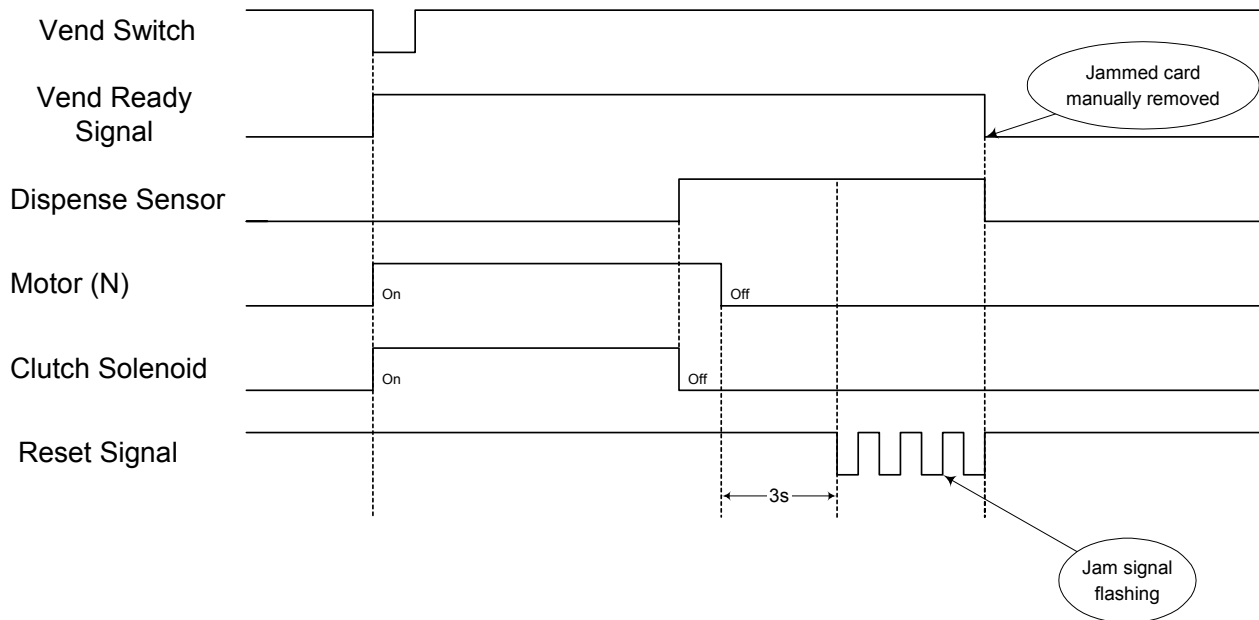
NOTE: For proper operation and to prevent damage to the CD-9603 PCB, it is necessary to connect each individual signal as indicated in this wiring guide. Pin #1 should not be interpreted as a common board level ground.

3.3 Timing Charts

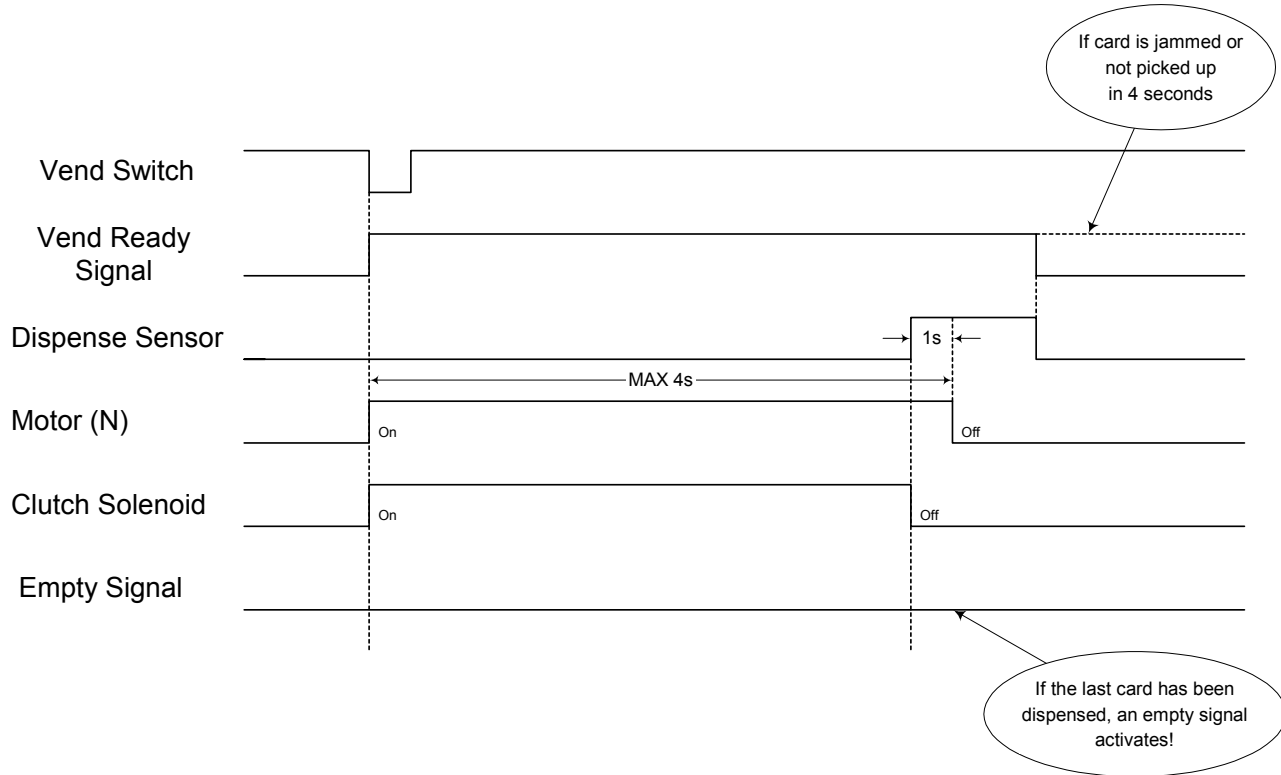
3.3.1 Non-dispensing within 4 seconds (Note: This is when a card cannot be pushed out from the cassette)



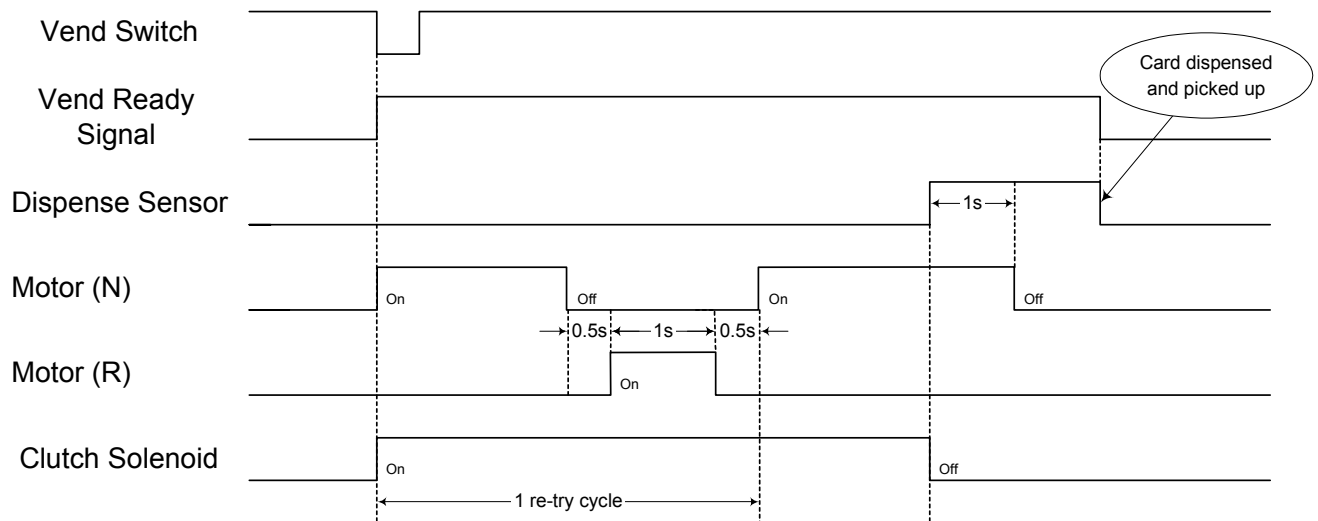
3.3.2 Card jams or card is not picked up (Note: This is when a card gets stuck partway through the dispense cycle)



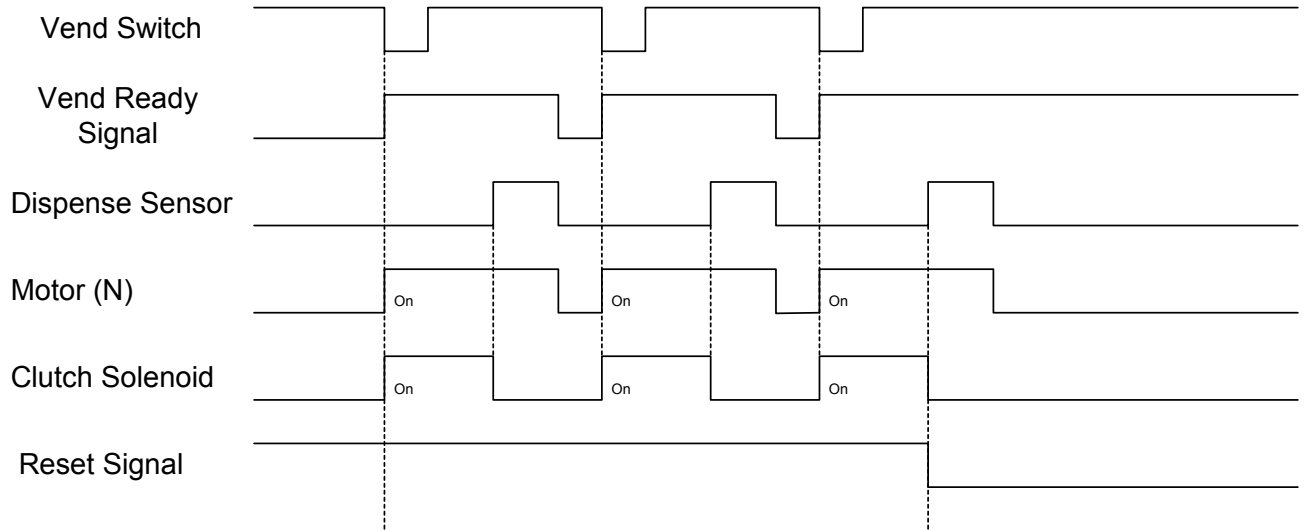
3.3.3 Normal dispensing



3.3.4 One re-try cycle



3.3.5 Continuous dispensing



以上内容仅为本文档的试下载部分，为可阅读页数的一半内容。如要下载或阅读全文，请访问：<https://d.book118.com/595030210021011041>