



鼻窦炎

- 急性鼻窦炎
- 慢性鼻窦炎

A large, stylized blue caduceus symbol is centered in the background of the slide. It consists of a vertical staff with a small circle at the top, two wings extending horizontally from the upper part, and a blue snake-like figure with its head at the bottom, coiled around the staff.

慢性鼻窦炎

(Chronic rhinosinusitis)

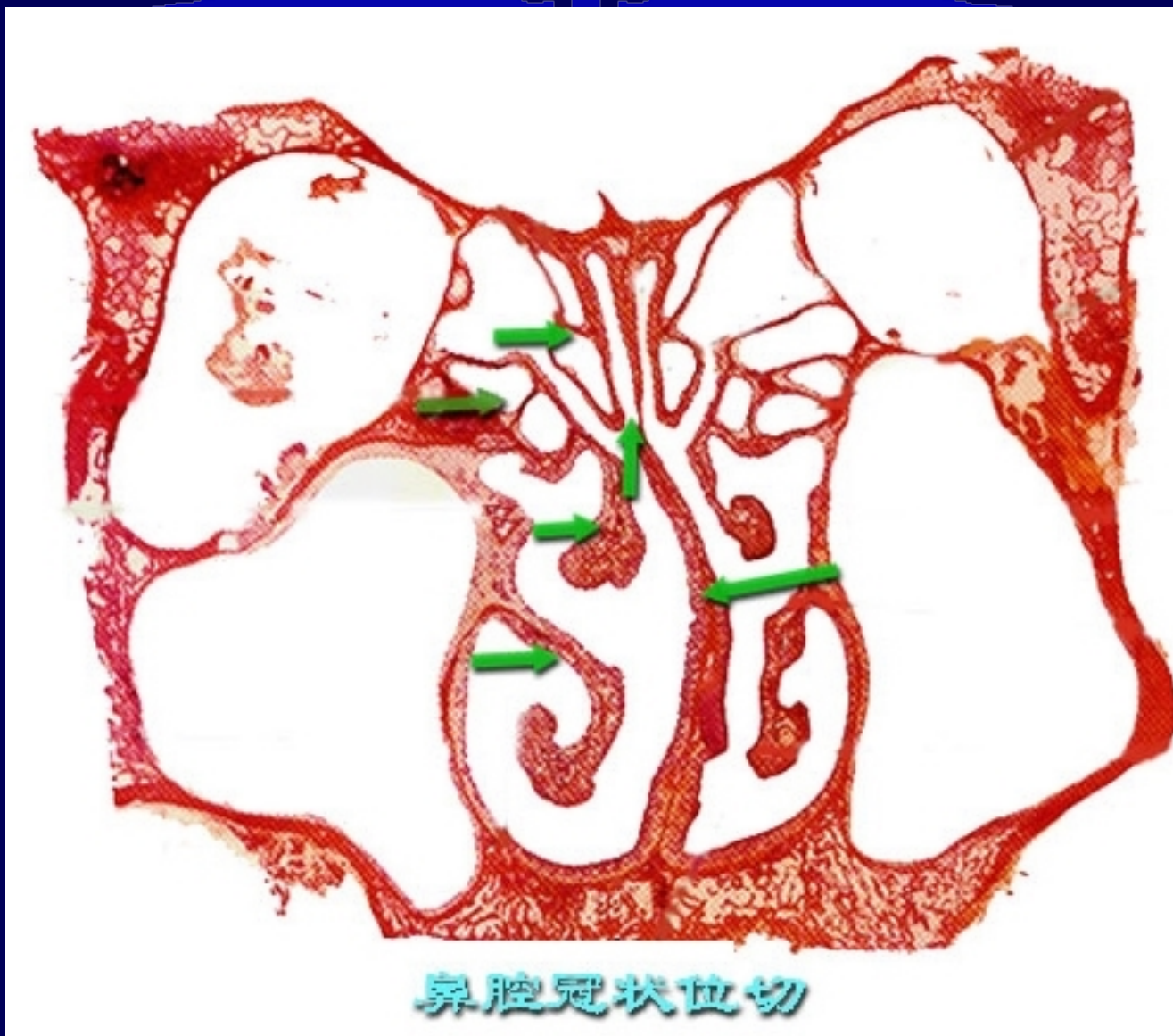


etiology

- 解剖因素(anatomy factors): 窦口鼻道复合体(ostiometal complex, OMC)
- 细菌感染(bacterial infection)
- 真菌感染及真菌变态反应(fungal inflammation and fungal allergy)
- 纤毛功能异常(disfunction of cilia system)
- 变态反应(allergy)

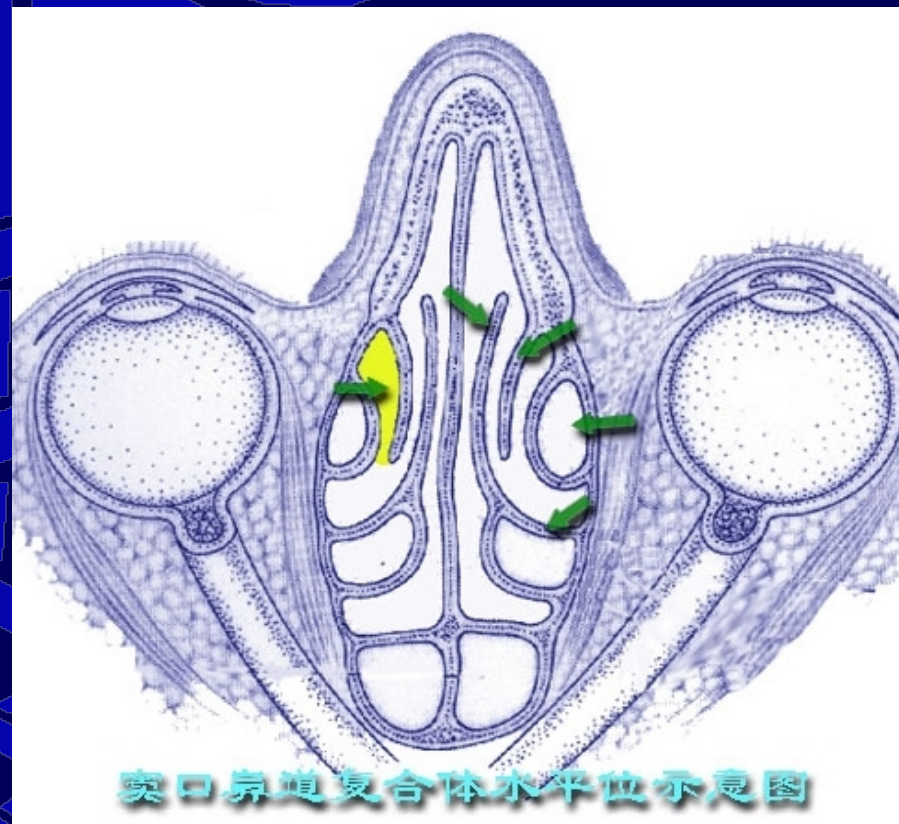
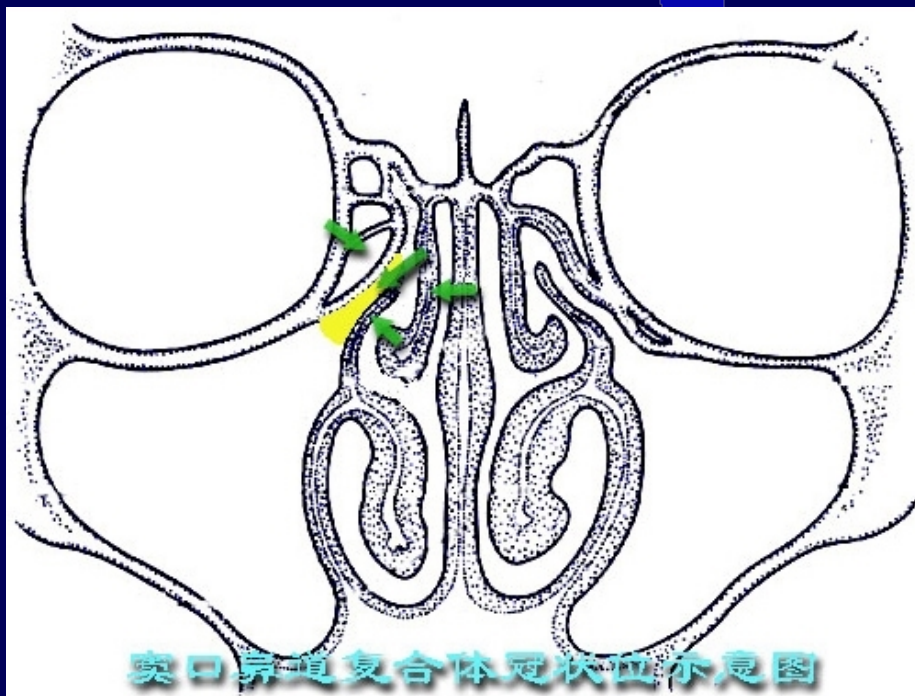


anatomy factors



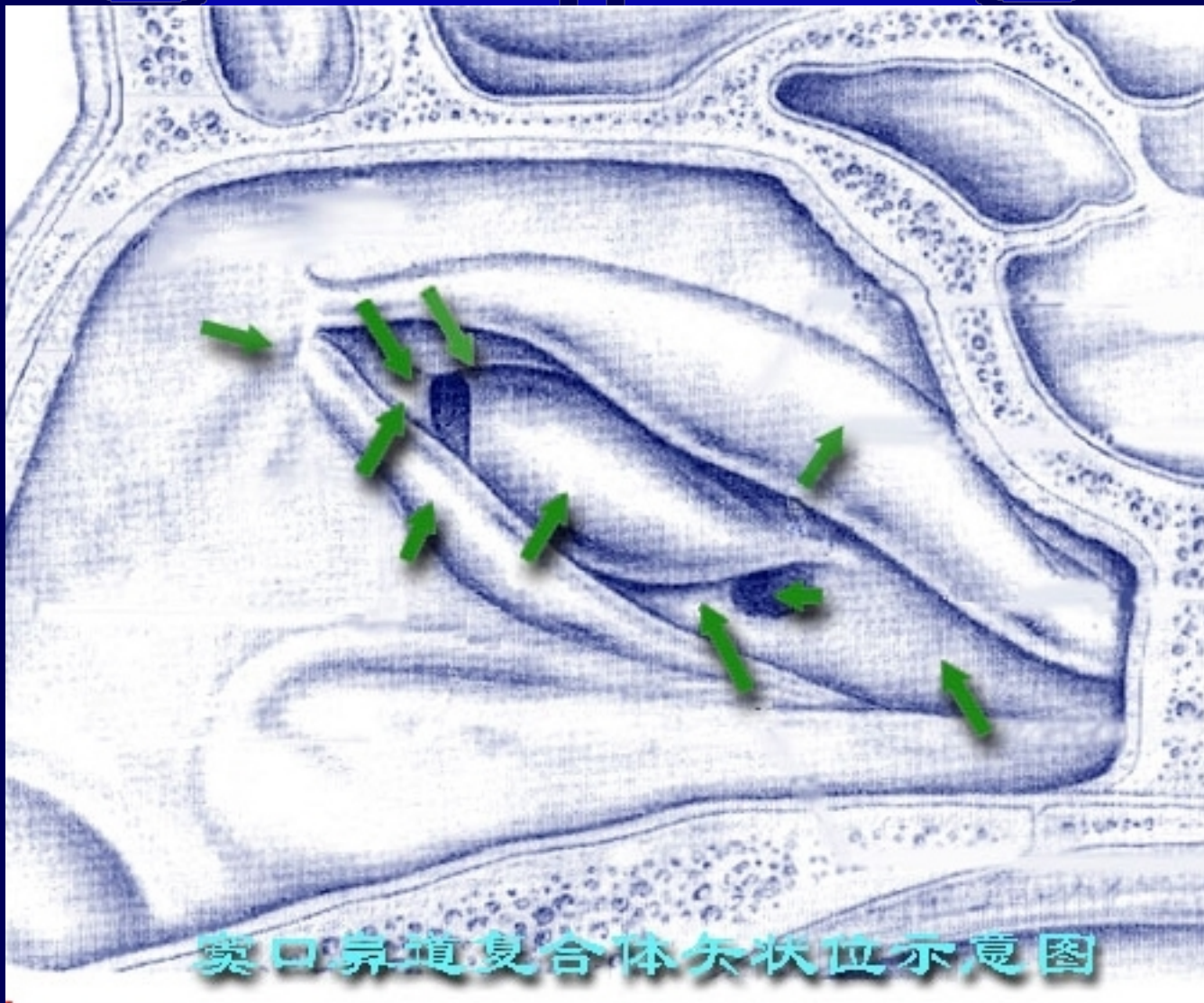


anatomy factors





anatomy factors



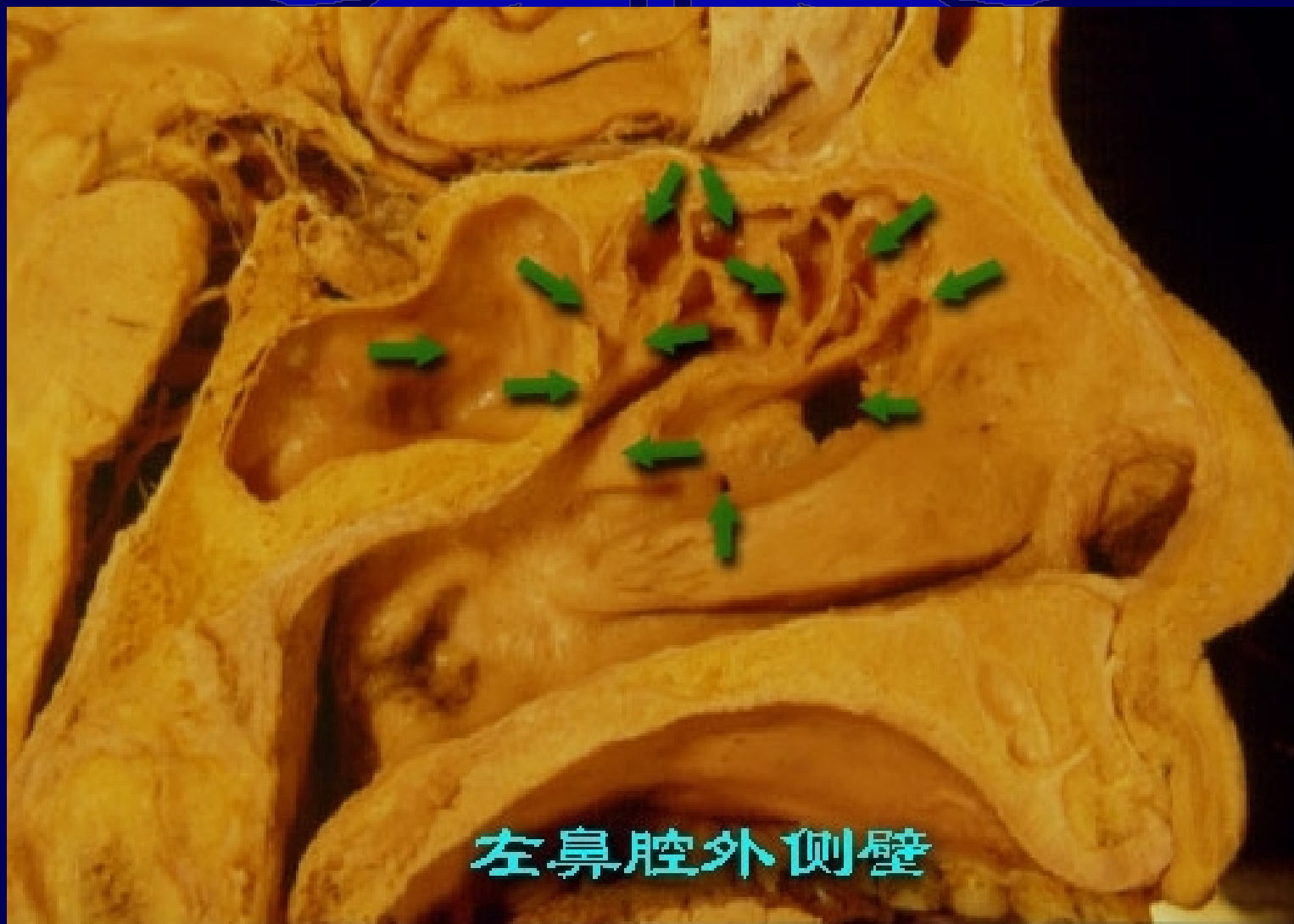
窦口鼻道复合体矢状位示意图



anatomy factors



颅的冠状切



左鼻腔外侧壁



- 细菌感染(bacterial infection):

acute → chronic

- 细菌超抗原(bacterial superantigen)



真菌性鼻-鼻窦炎 (fungal rhinosinusitis)

- 变应性真菌性鼻-鼻窦炎 (allergic fungal rhinosinusitis, AFRS)
- 嗜酸粒细胞性真菌性鼻-鼻窦炎 (eosinophilic fungal rhinosinusitis, EFRS)

机体免疫系统对真菌的战争 (the war of the immune system against fungi)



pathology

- 粘膜病理改变表现为水肿(oedema)、增厚(thicken)、血管增生(Vascular proliferation)、淋巴细胞浸润(lympholeukocyte infiltration)、上皮纤毛脱落或鳞状化生(squamous metaplasia)以及息肉样变。
- 根据不同的病理改变，可分为水肿浸润型、浸润型和浸润纤维型。



clinical manifestation

- 全身症状(general symptoms)

轻重不等，有时则无。较常见为精神不振、易倦、头昏、记忆力减退、注意力不集中等



clinical manifestation

- **局部症状 (local symptoms)**

脓涕(suppurative nasal discharge)

鼻塞(nasal obstruction)

头痛(headache)

嗅觉减退(olfactory hyposmia)

视觉障碍(visual disorder)



头痛的特点:

- 伴随鼻塞、流脓涕和嗅觉减退等症状
- 多有时间性或固定部位
- 休息、滴鼻药、蒸汽吸入或引流改善、鼻腔通气后头痛减轻。咳嗽、低头位或用力时因头部静脉压升高而使头痛加重。吸烟、饮酒和情绪激动时头痛亦加重

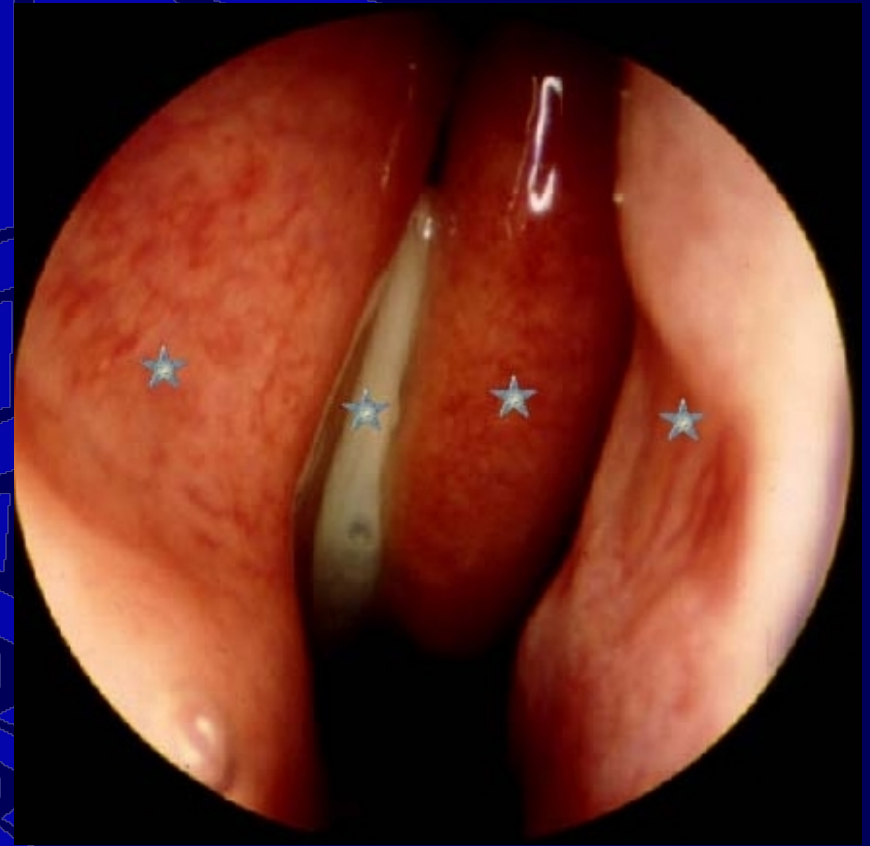


Examination & Diagnosis

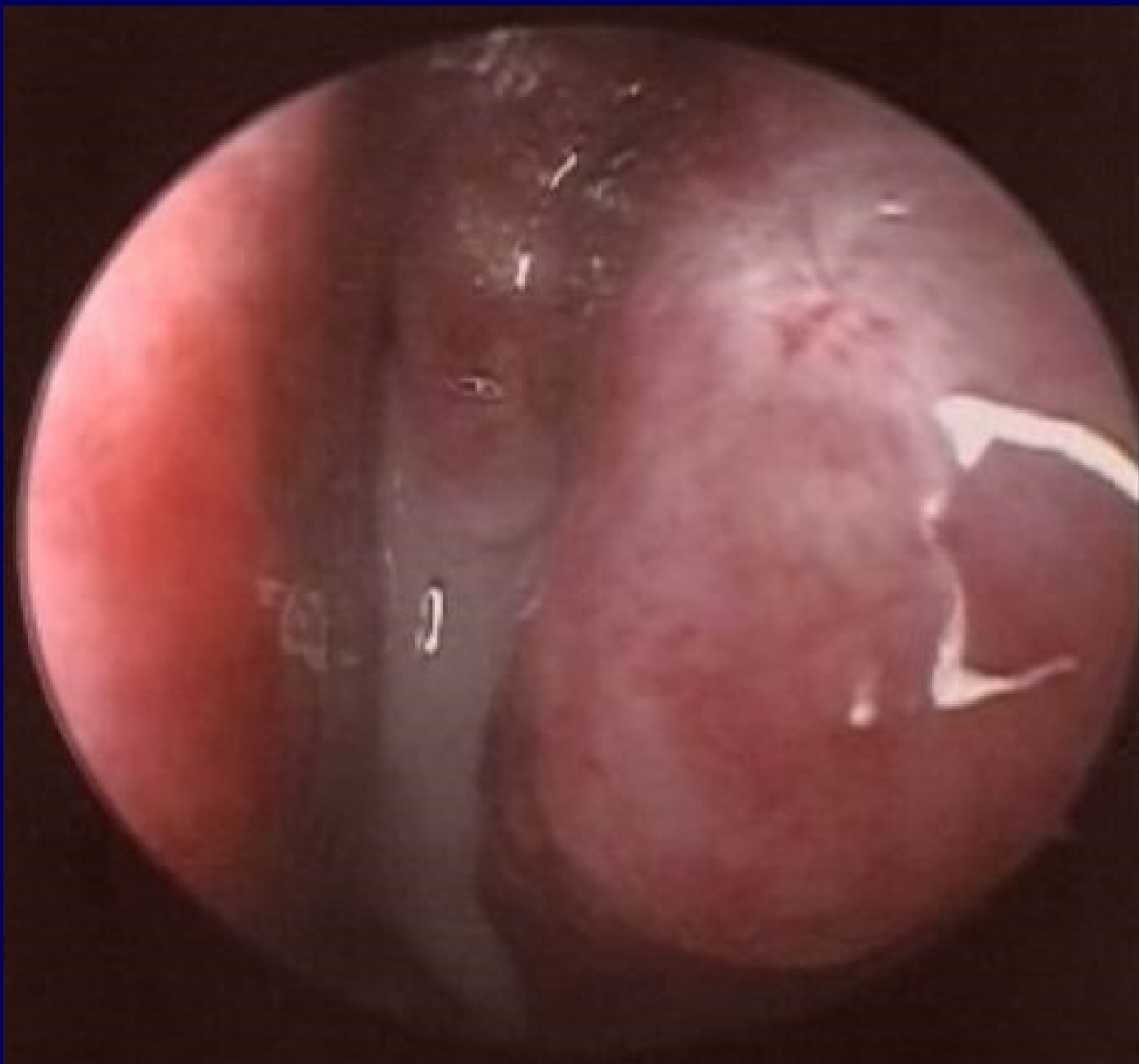
- 病史(history)
- 局部检查(local examination)
- 影像学检查(imaging)
- 上颌窦穿刺(puncture antral)



normal

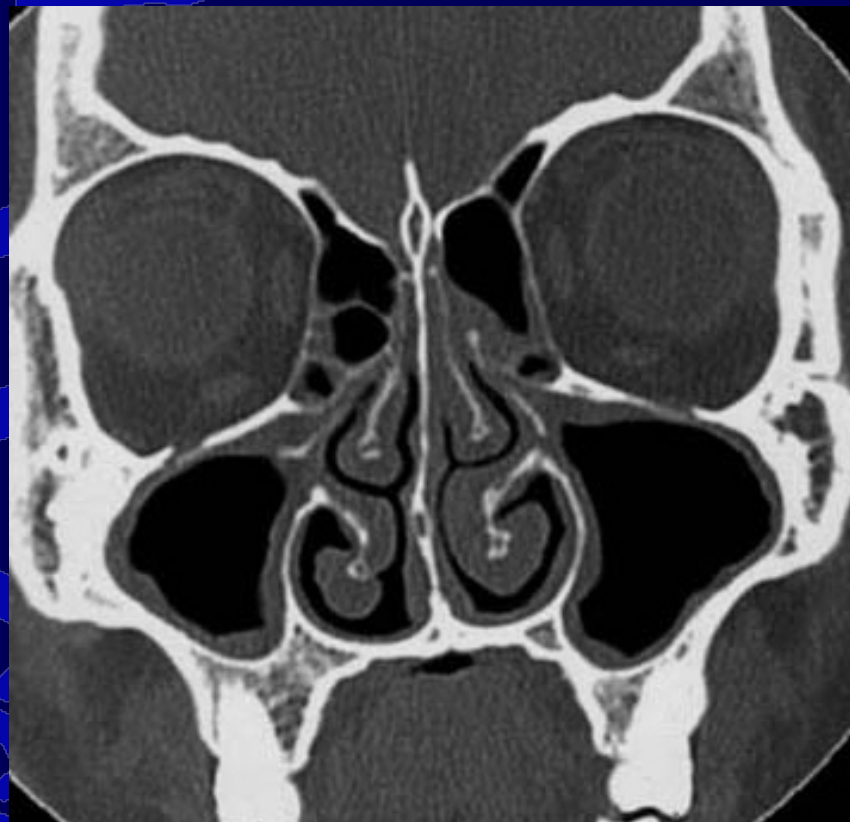


**Obstruction of
middle nasal meatus**

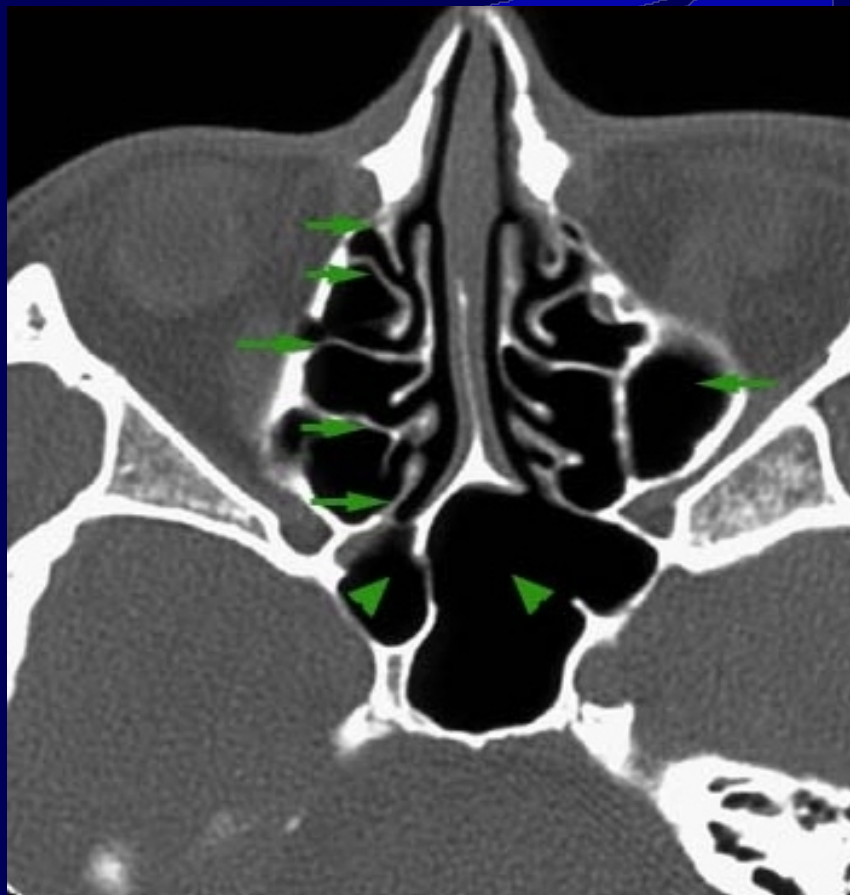




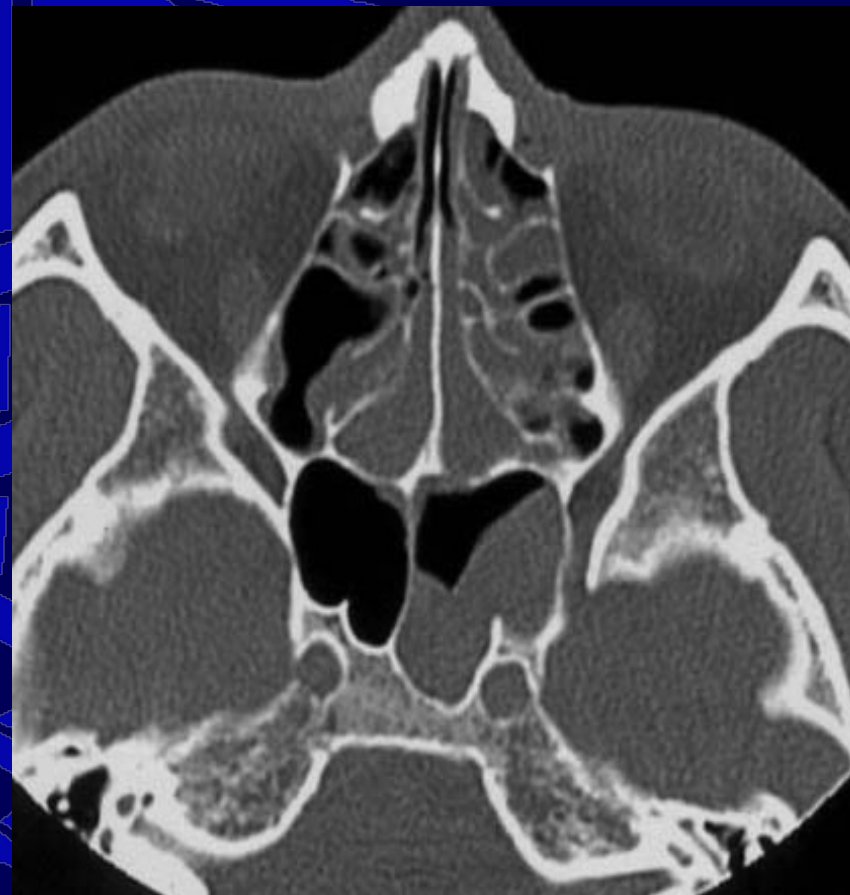
Normal



CRS



Normal



CRS

以上内容仅为本文档的试下载部分，为可阅读页数的一半内容。如要下载或阅读全文，请访问：<https://d.book118.com/658006051016006117>