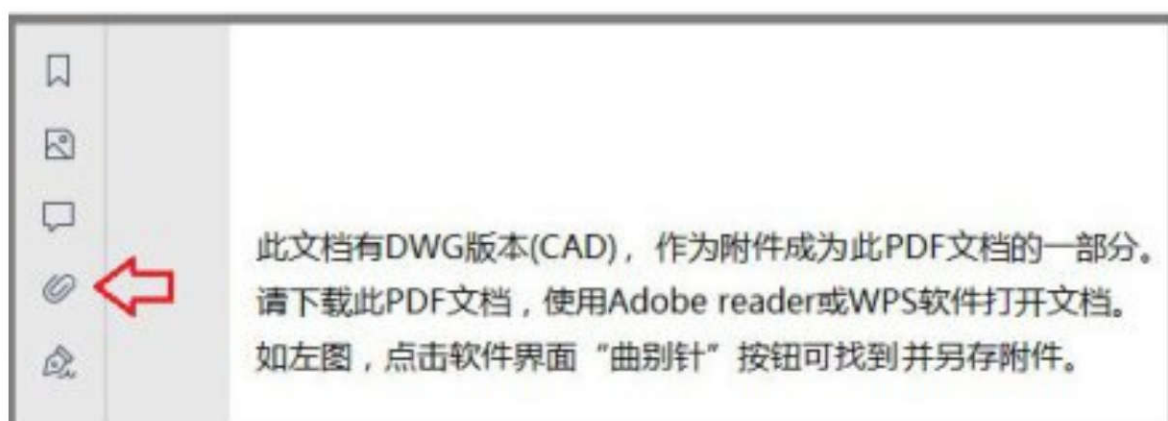


ALUMINIUM SYSTEMS 
HUECK Volato SLS 075

SCHIEBE-SYSTEM
SLIDING-SYSTEM





SCHIEBE-SYSTEM / SLIDING-SYSTEM

HUECK VOLATO SLS 075

Mit sehr filigranen Ansichten und großen Glasflächen eröffnet die Schiebserie HUECK Volato SLS 075 vielfältige gestalterische Möglichkeiten für Architekten und Planer. Durch Rahmenbautiefen ab 75 mm ist das komfortabel zu bedienende Aluminium-Schiebesystem kompatibel mit dem HUECK Lambda WS/DS 075 Fenster- und Türenbaukasten und lässt sich darüber hinaus harmonisch in die Fassadenkonstruktion HUECK Trigon integrieren. Die vielfältigen Ausführungsvarianten als ein-, zwei- oder drei-spurige Variante sowie als „Monorail“ schaffen Gestaltungsfreiheit für die Entwicklung attraktiver architektonischer Konzepte. Im Rahmen des serienübergreifenden Gleichteilekonzepts ist HUECK Volato SLS 075 nicht nur verarbeitungsoptimiert, sondern auch sehr einfach und rationell zu montieren.

With very slender elevations and large glass surfaces, the HUECK Volato SLS 075 sliding series opens up diverse creative possibilities for architects and planners. Thanks to frame profile depths starting from 75 mm, this easy-to-use aluminium door system is compatible with the HUECK Lambda WS/DS 075 modular window and door system and also integrates smoothly into the HUECK Trigon façade construction. The broad range of design variants – in single-, double- and triple-tracked and “monorail” versions – provides creative freedom for the development of attractive architectural concepts. Within the framework of our cross-series component-sharing concept, HUECK Volato SLS 075 is not only optimised for processing but also ensures extremely straightforward and efficient assembly.

HUECK Volato SLS 075

Betrachten Sie dieses Produkt in 3D!
View this product in 3D!



Filigrane Profilansichten
Schmales Labyrinth
mit nur 35 mm Ansicht
Slender profile widths
Slender labyrinth with an
elevation width of just 35 mm

Individuelle Verglasung
Füllungsdicke Rahmen 36 mm
Füllungsdicken Flügel 36 mm
Individual glazing
Frame filling thickness of 36 mm
Leaf filling thicknesses of 36 mm

Flexibler Beschlag
Laufwagen auf unterschiedliche
Flügelgewichte abgestimmt
Versatile fitting
Tandem roller tailored to
different sash weights

Variantenvielfalt
Schema A, D, C, F, K und E sowie Monorail
Wide range of designs
Schema A, D, C, F, K and E, as well as monorail

LEISTUNGSEIGENSCHAFTEN*

PERFORMANCE CHARACTERISTICS*

Klassifizierung / Wert
Classification / Value

WÄRMEDURCHGANGSKOEFFIZIENT
THERMAL TRANSMITTANCE
EN ISO 10077-2

$U_f \geq 2,8 \text{ W/m}^2\text{K}$

WIDERSTANDSFÄHIGKEIT GEGEN WINDLAST
RESISTANCE TO WIND LOAD
EN 12210

C4

SCHLAGREGENDICHTHEIT
WATER TIGHTNESS
EN 12208

9A

LUFTDURCHLÄSSIGKEIT
AIR PERMEABILITY
EN 12207

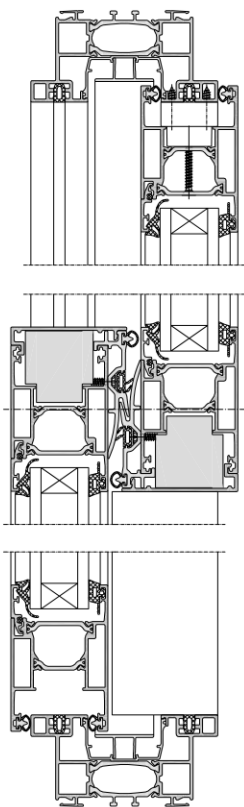
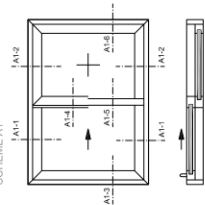
4

EINBRUCHHEMMUNG
BURGLAR RESISTANCE
EN 1627

RC2

* Angegebene Leistungseigenschaften im Prüfverfahren. Gültige Prüfzeugnisse sowie technische Informationen finden Sie im Download-Bereich unter www.hueck.de - Quoted performance characteristics in test procedure. Valid test reports as well as technical information can be found in the download area of the site www.hueck.com

SCHEMA A1
SCHEME A1



A1-6

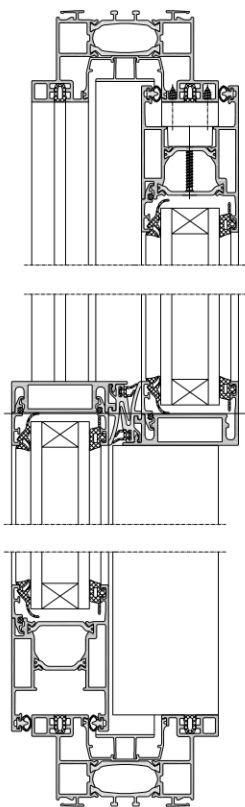
A1-4

A1-3

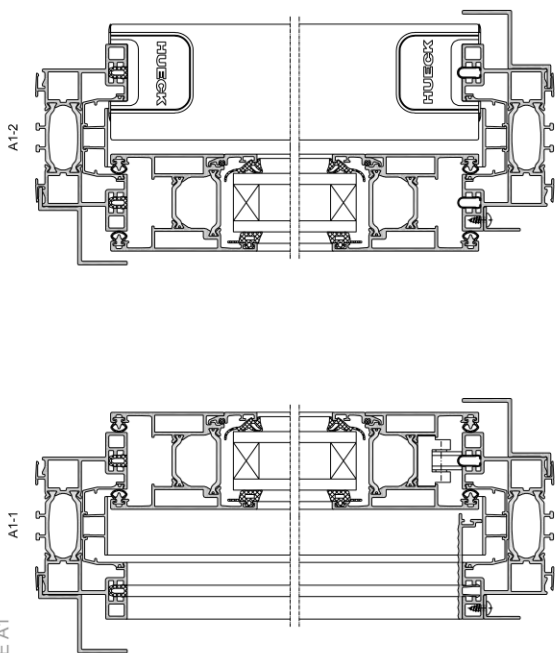
A1-6

A1-5

A1-3



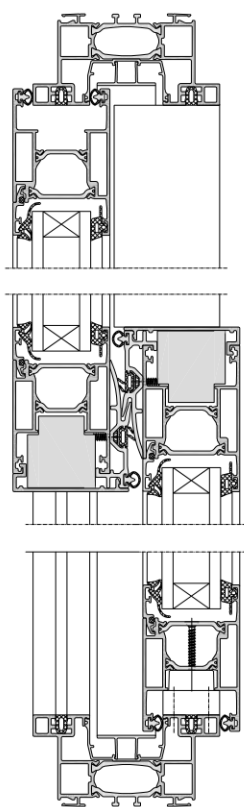
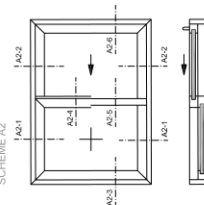
SCHEMA A1
SCHEME A1



A1-2

A1-1

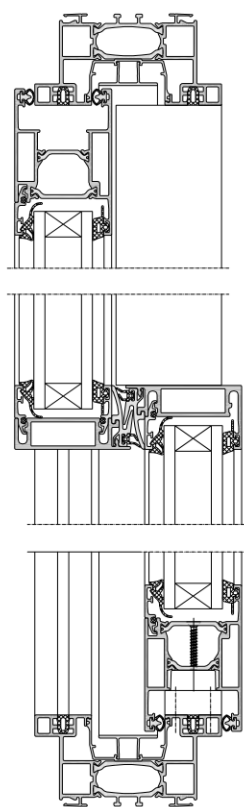
SCHEMA A2
SCHEME A2



A2-6

A2-4

A2-3

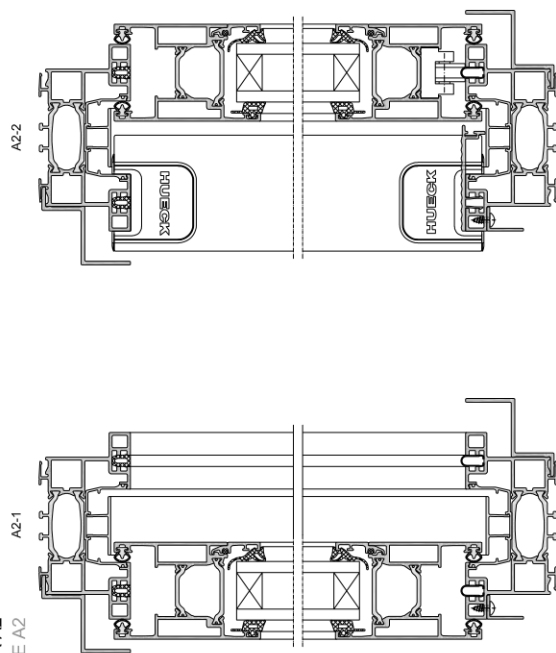


A2-6

A2-5

A2-3

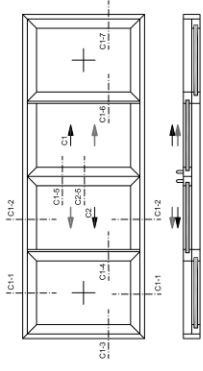
SCHEMA A2
SCHEME A2



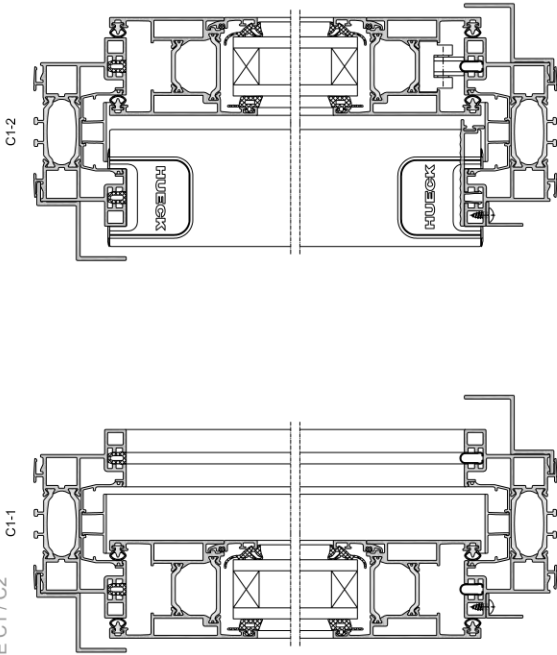
A2-2

A2-1

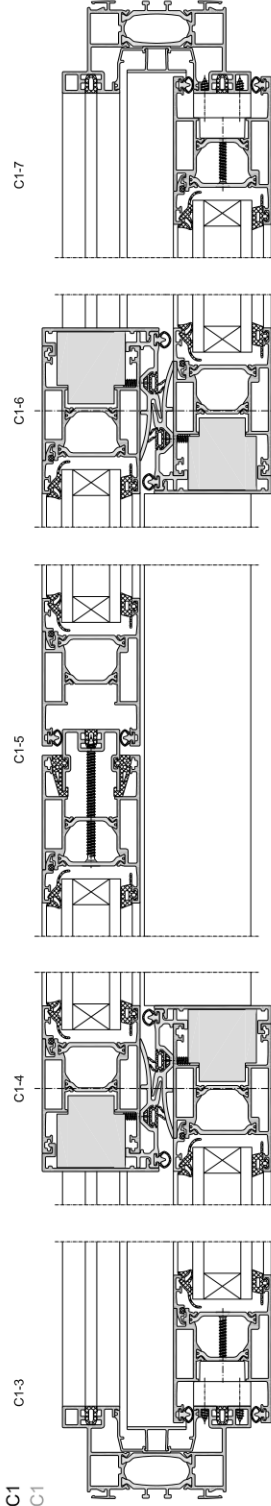
SCHEMA C1 / C2
SCHEME C1 / C2



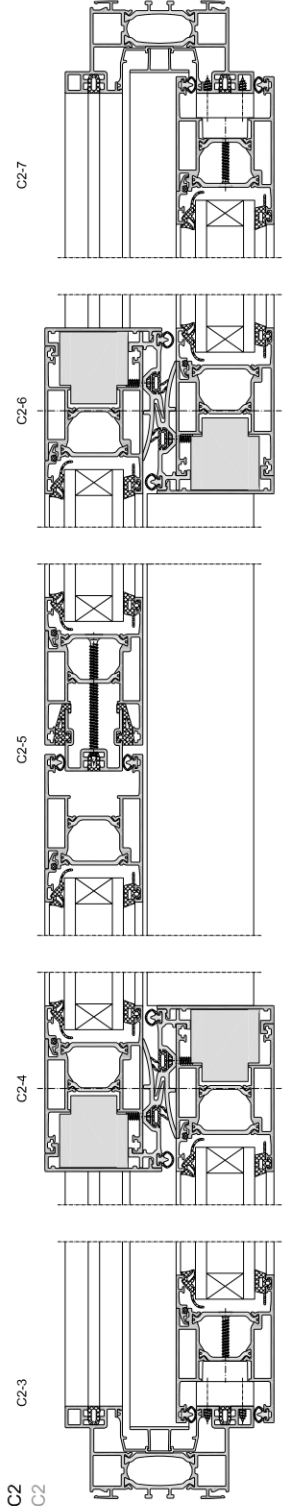
SCHEMA C1 / C2
SCHEME C1 / C2

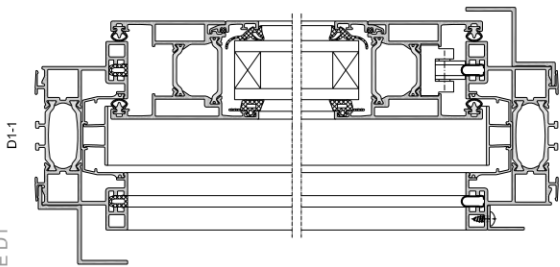
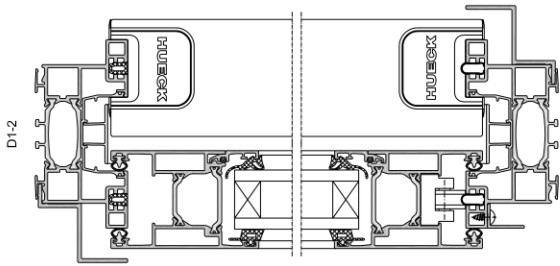
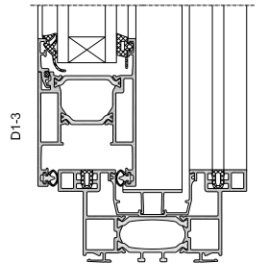
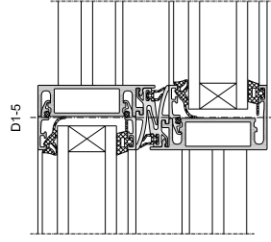
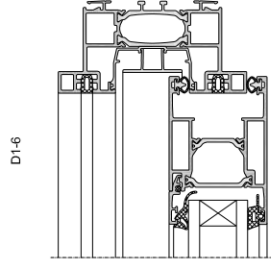
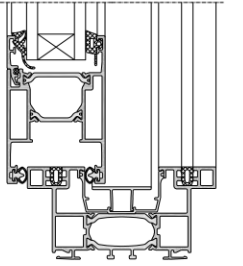
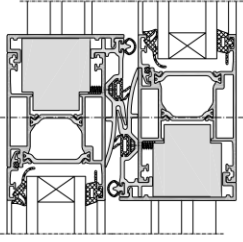
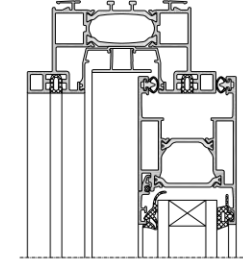
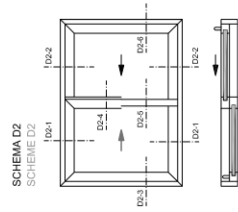
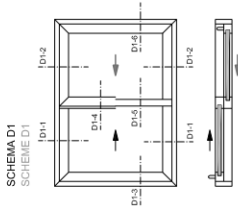


SCHEMA C1
SCHEME C1

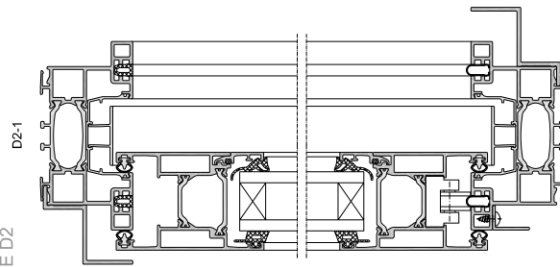
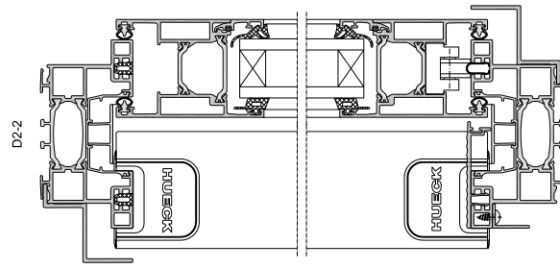
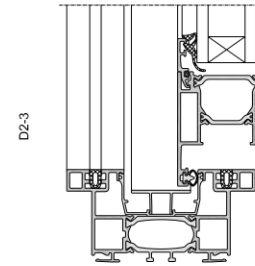
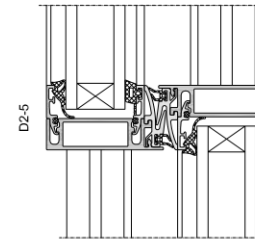
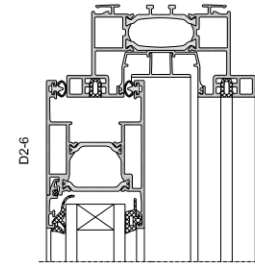
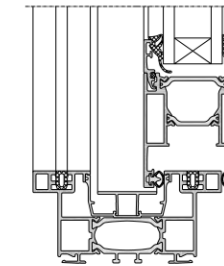
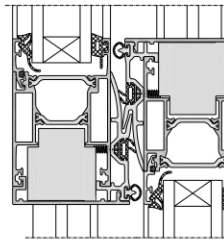
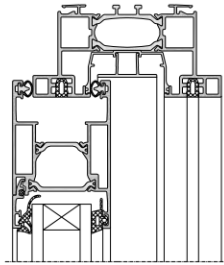


SCHEMA C2
SCHEME C2

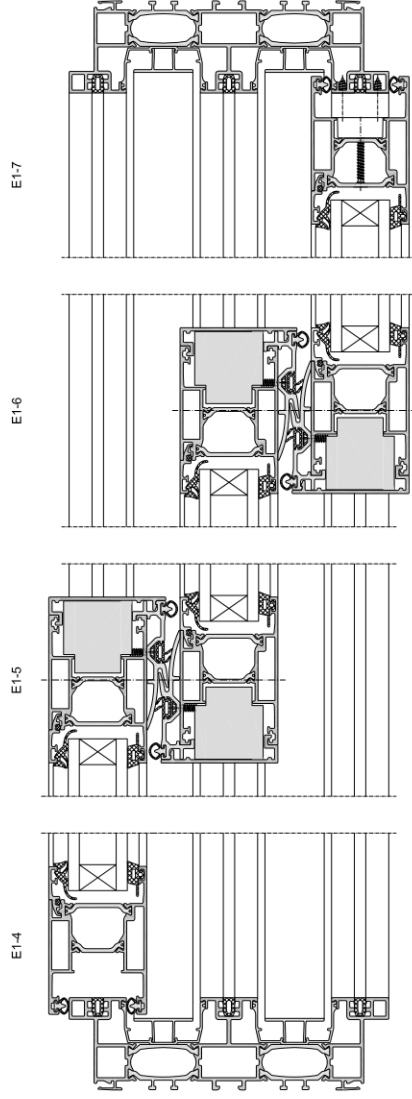
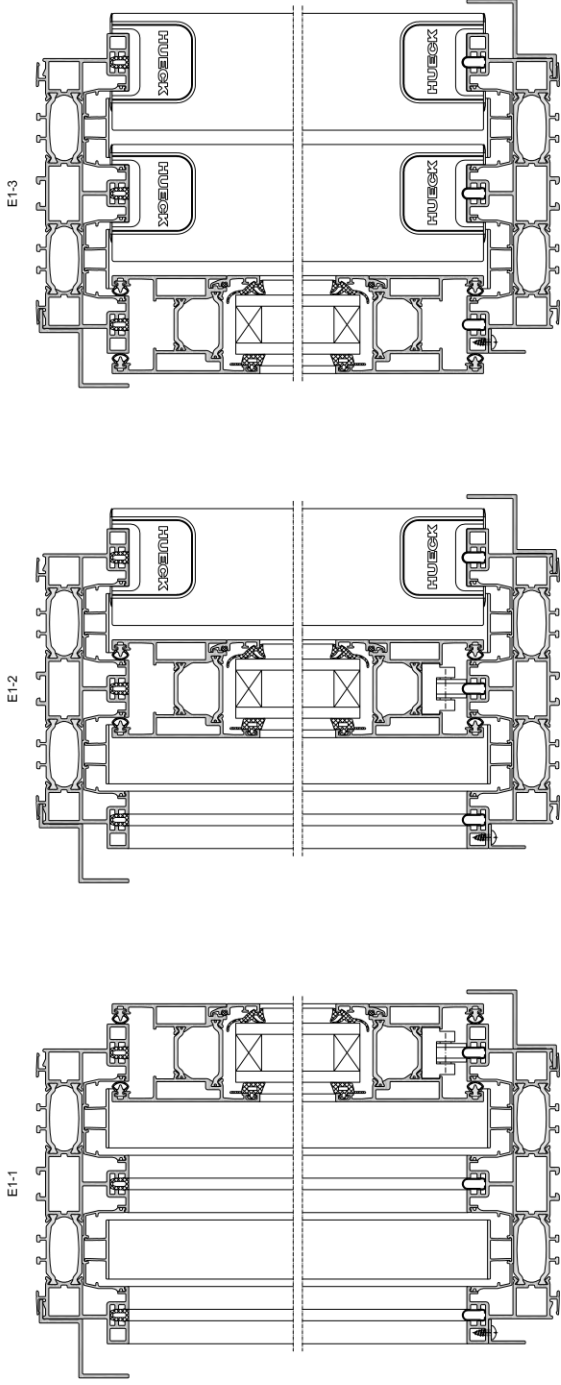
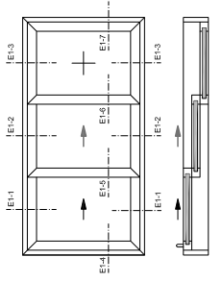


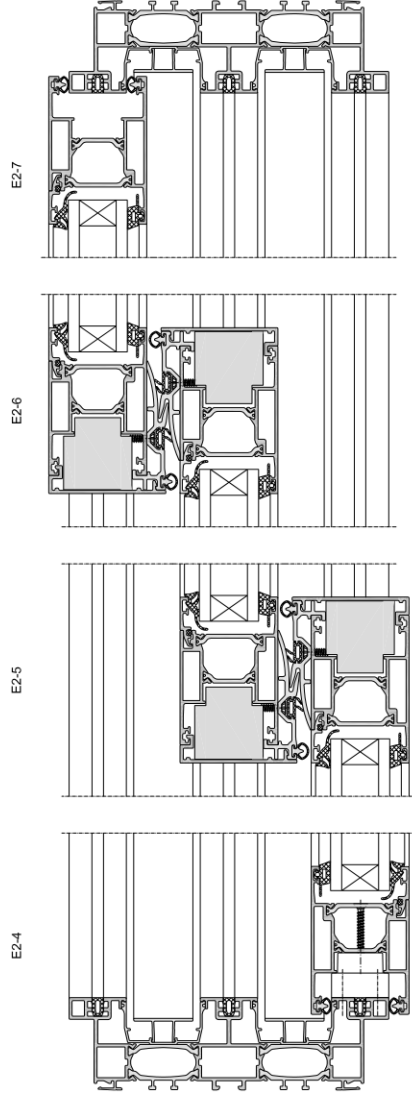
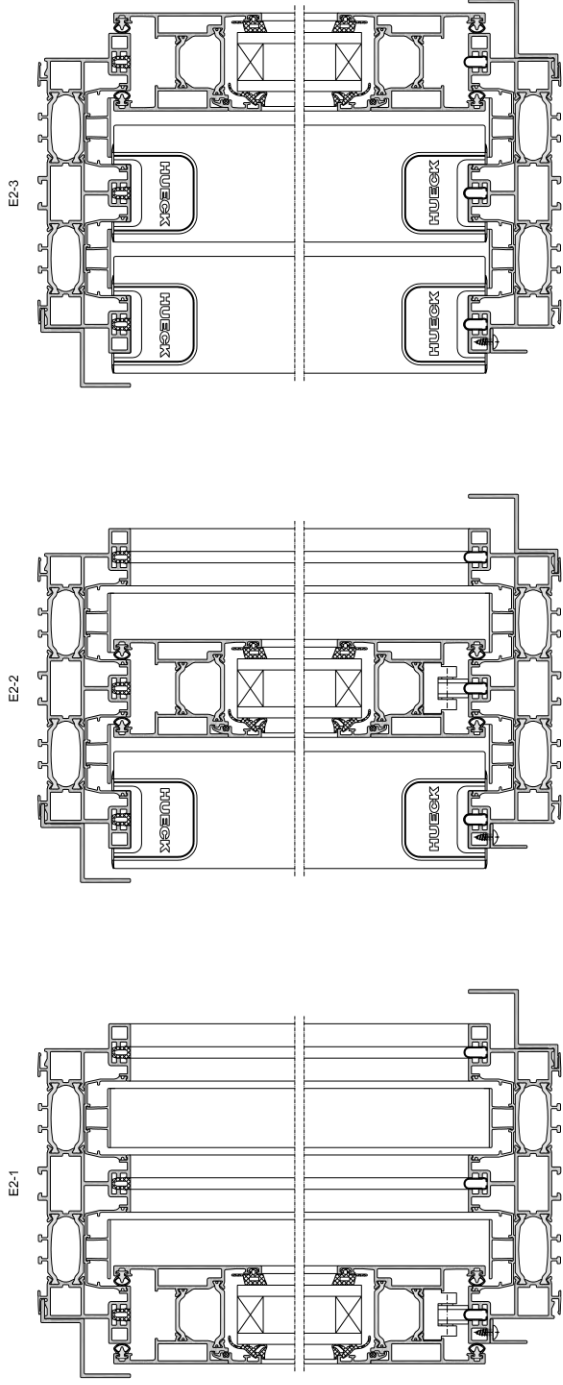
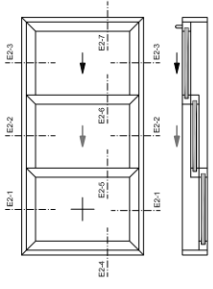


SCHEMA D1
SCHEMA D1



SCHEMA D2
SCHEMA D2





以上内容仅为本文档的试下载部分，为可阅读页数的一半内容。如要下载或阅读全文，请访问：<https://d.book118.com/70711152015006100>