



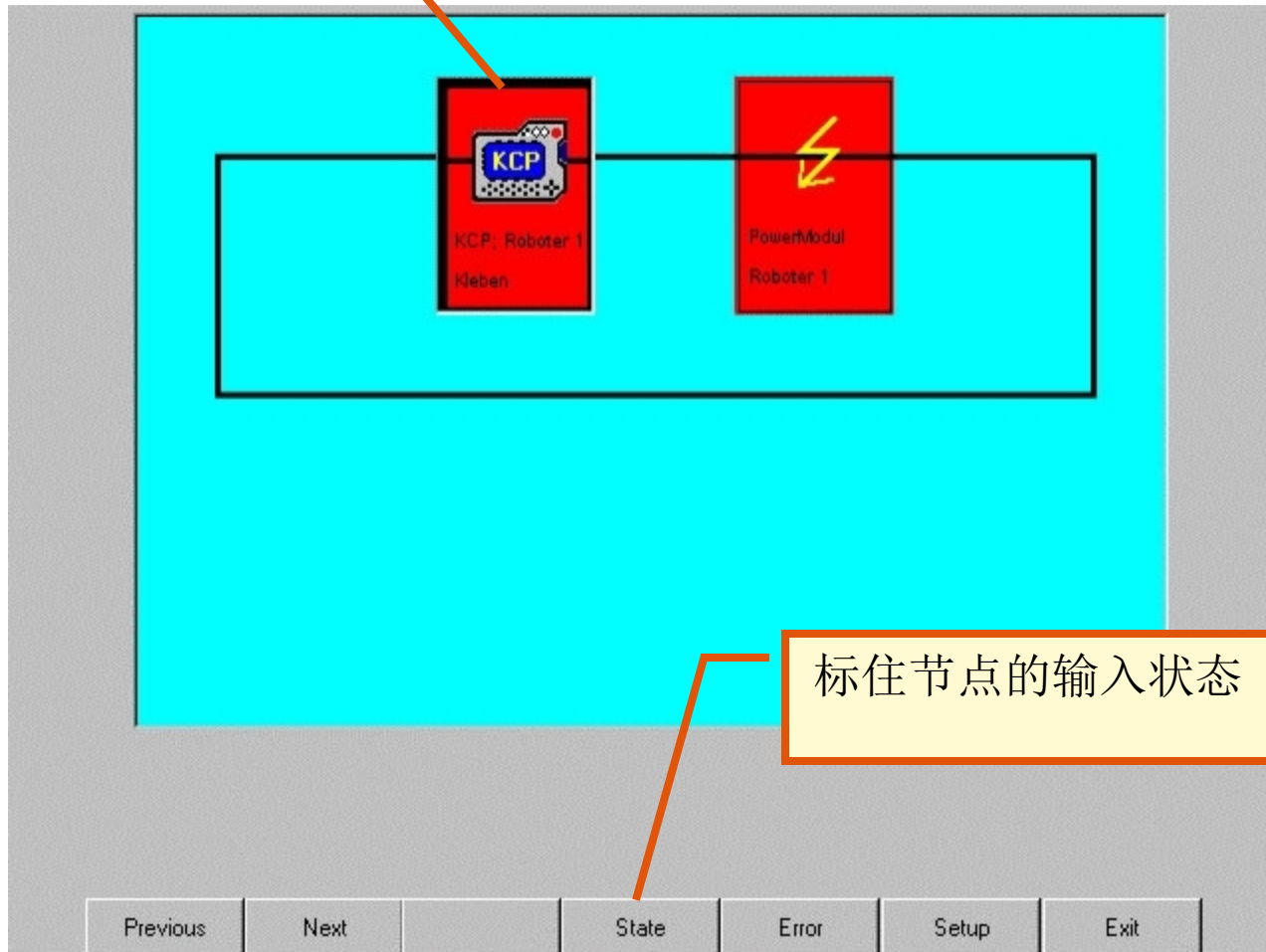
节点号由总线环路按顺序给定
节点主定为0号.

ESC节点0= KCP

ESC节点 1 = KPS

MFC 没有节点号 (传递节点).

标注的节点





**Safety circuit diagnosis:
Stateview**

Stateview: KCP; Roboter 1

State	Value
Safetyswitch (PL)	False
Drives	False
Qualify input	False
Safetyswitch	False
Operation mode	True
User safety	False
Ext. emergency stop	True
Loc. Emergency stop	False
ESCDiagRHelpCont	False
activate drives	not activatec
Drives	Off

Beschreibung
Safetyswitch (PL)
False
Panic level

State Error Setup Close



Safety circuit diagnosis:
Stateview

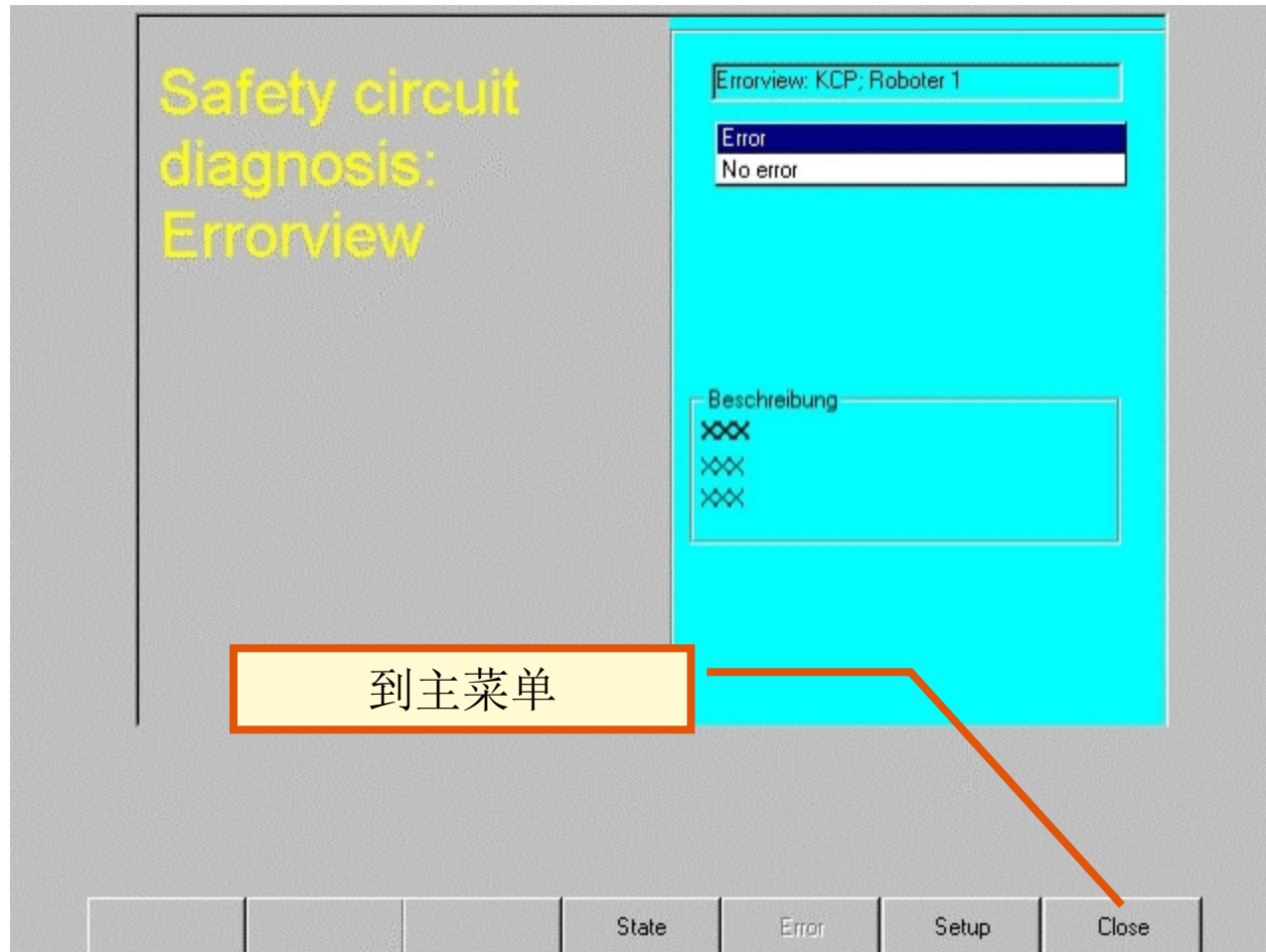
Stateview: KCP; Roboter 1

State	Value
Safetyswitch (FL)	False
Drives	True
Qualify input	False
Safetyswitch	True
Operation mode	True
User safety	False
Ext. emergency stop	True
Loc. Emergency stop	True
ESCDiagRHelpCont	True
activate drives	not activatec
Drives	On

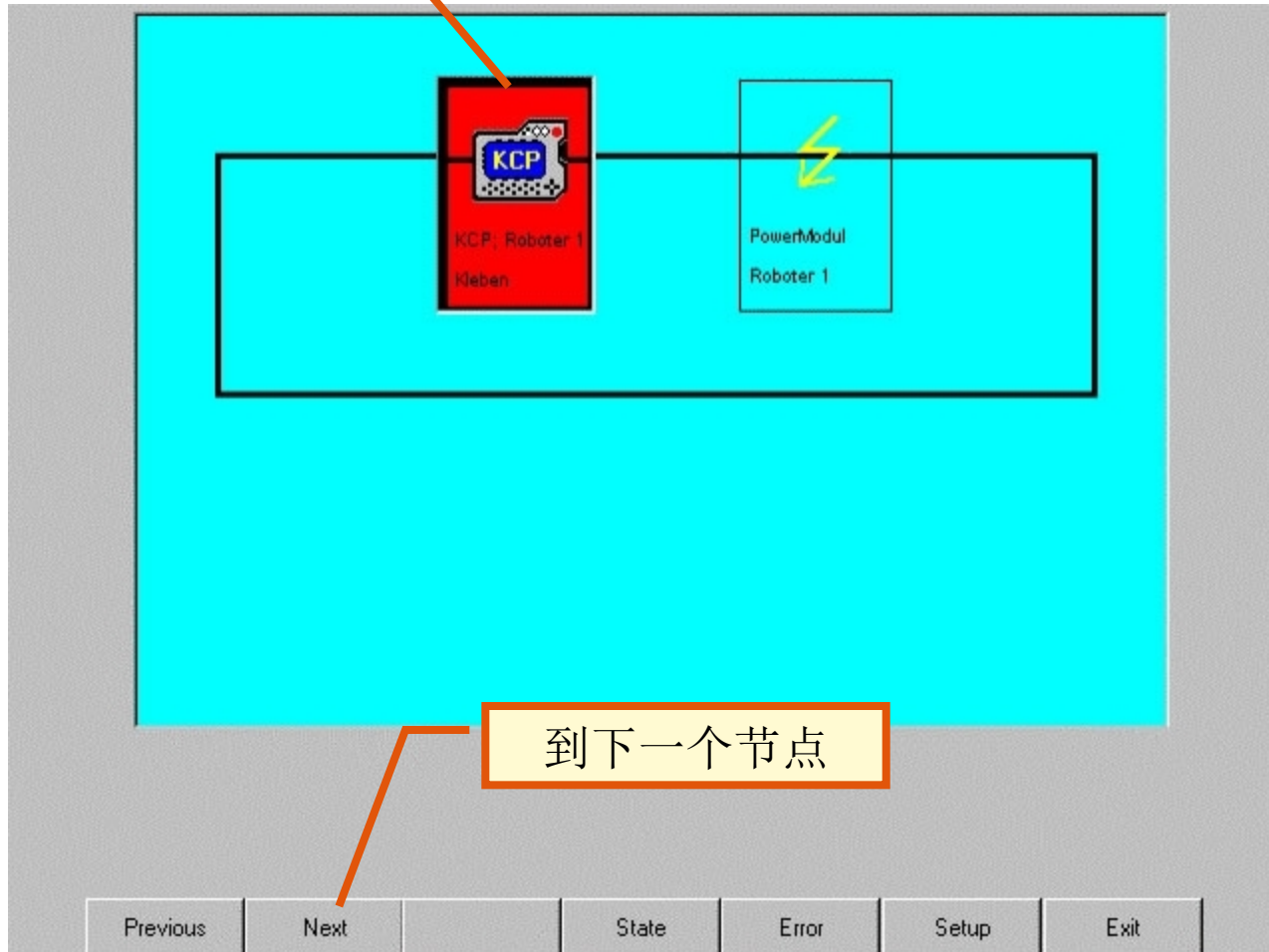
Beschreibung
Drives
On
State of drives

State Error Setup Close

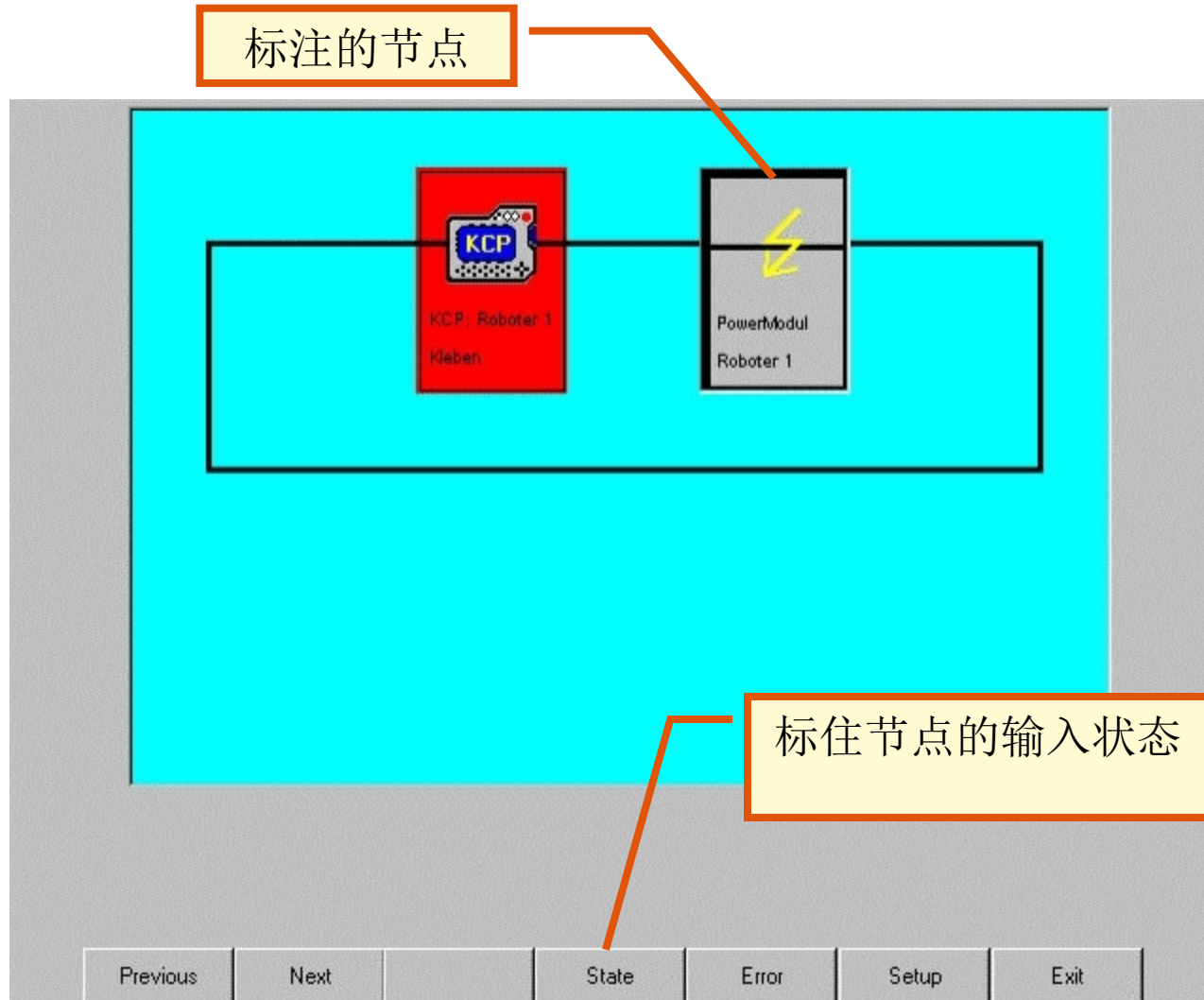
错误显示



标注的节点



到下一个节点





Safety circuit diagnosis:
Stateview

Stateview: PowerModul

State	Value
Safetyswitch (PL)	False
Drives	True
Qualify input	False
Safetyswitch	True
Operation mode	???
User safety	False
Ext. emergency stop	True
Loc. Emergency stop	True
ESCDiagRHelpCont	False
activate drives	not activatec
Drives	Off

Beschreibung
Safetyswitch (PL)
False
Panic level

State Error Setup Close

ESC- 错误 (双通道保护故障)

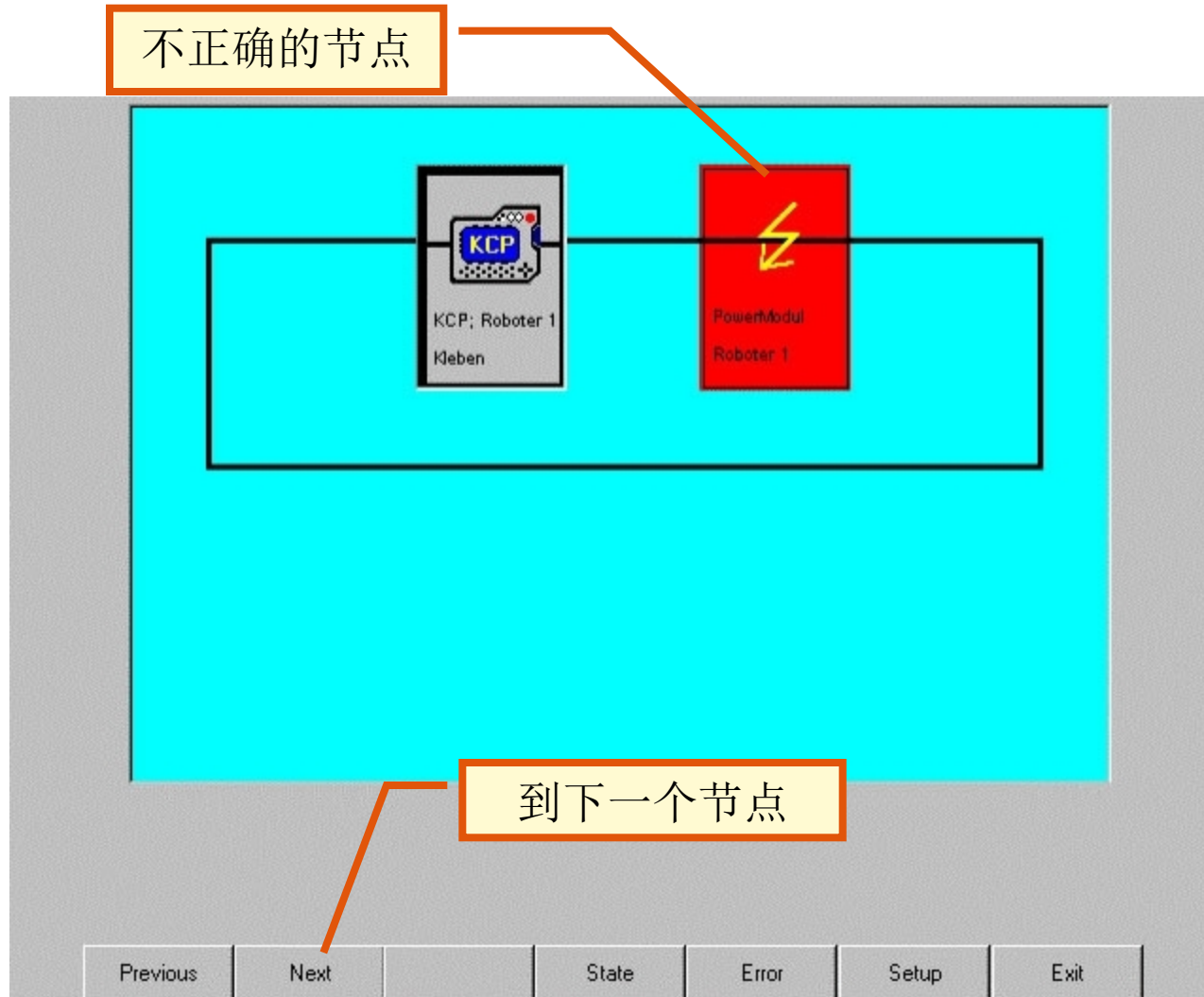


	Ti...	no.	Source	Message
	07:34	200	/	Drives contactor off
	07:34	289		Over temperature fan PM1
	07:36	207	/	Operator safety / Gate open

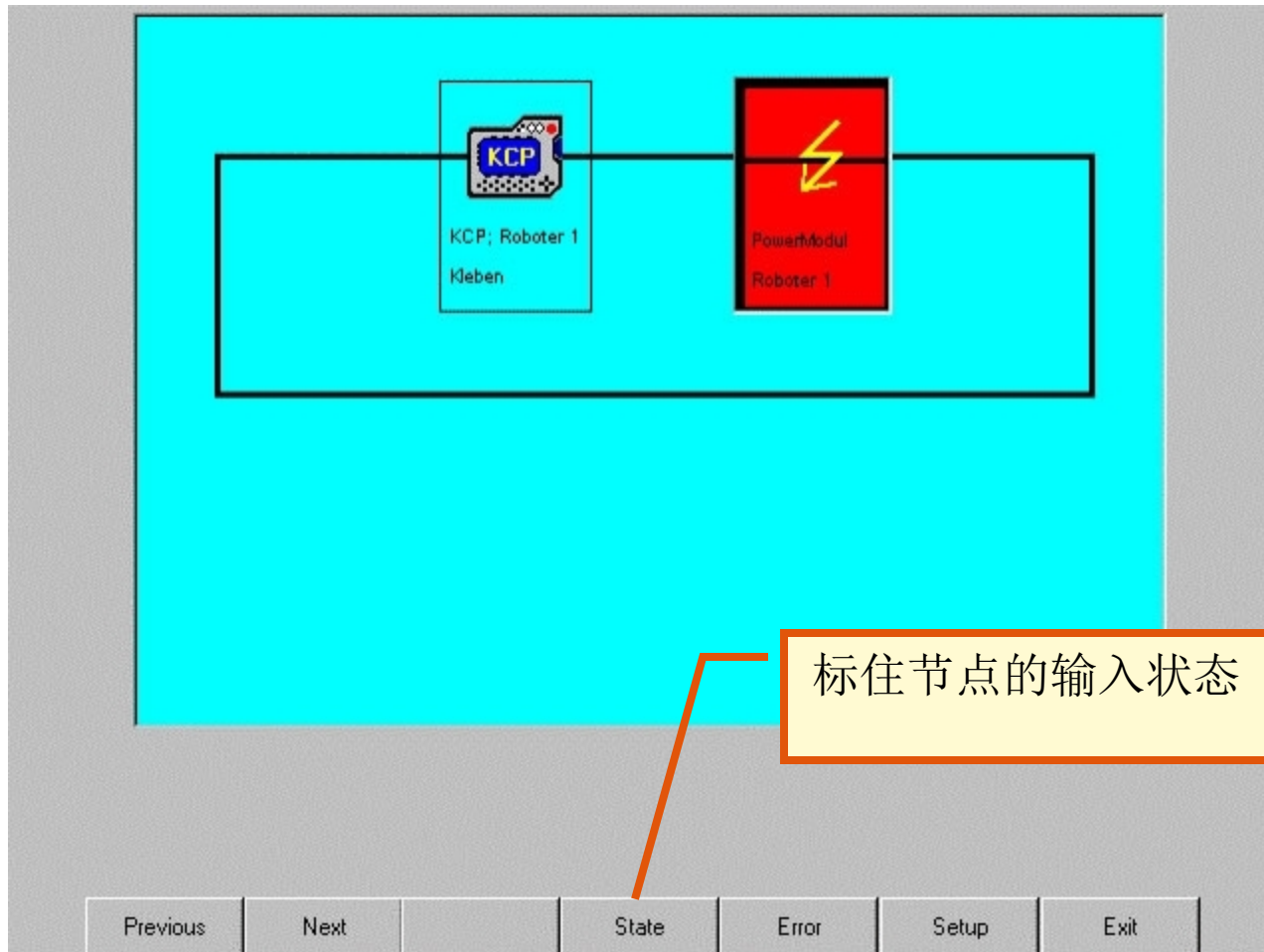
NUM CAPS **S** **R** AUT POV=100% R_Name 07:37

安全门关闭，我们
获得 这条信息

ESC- 错误(双通道保护故障)



ESC- 错误 (双通道保护故障)



ESC-错误r (双通道保护故障)



Safety circuit diagnosis:
Stateview

Stateview: PowerModul

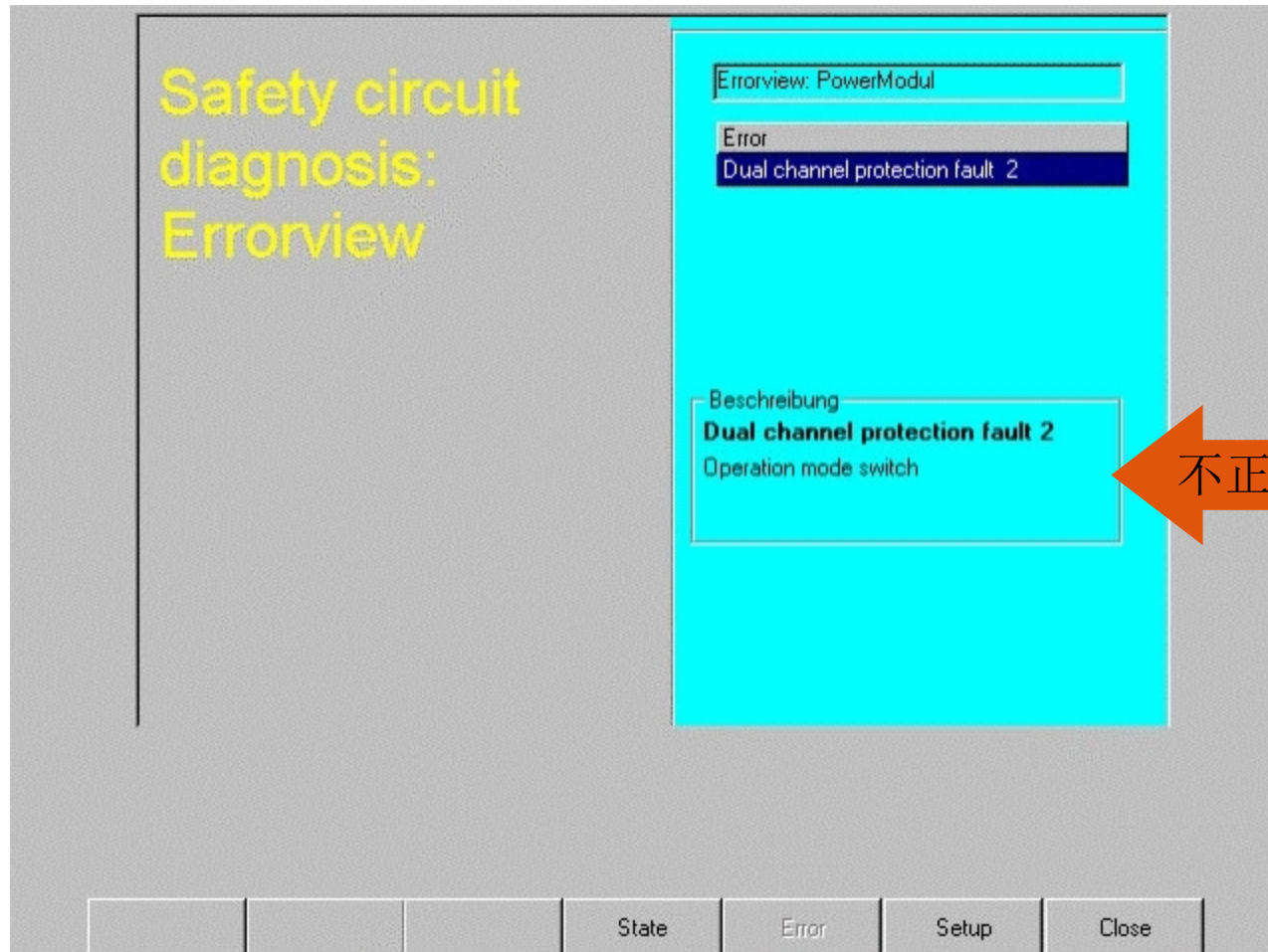
State	Value
Safetyswitch (PL)	False
Drives	True
Qualify input	False
Safetyswitch	True
Operation mode	???
User safety	True
Ext. emergency stop	True
Loc. Emergency stop	True
ESCDiagRHelpCont	False
activate drives	not activatec
Drives	Off

Beschreibung
Safetyswitch (PL)
False
Panic level

错误显示

State Error Setup Close

ESC-错误 (双通道保护故障)



不正确

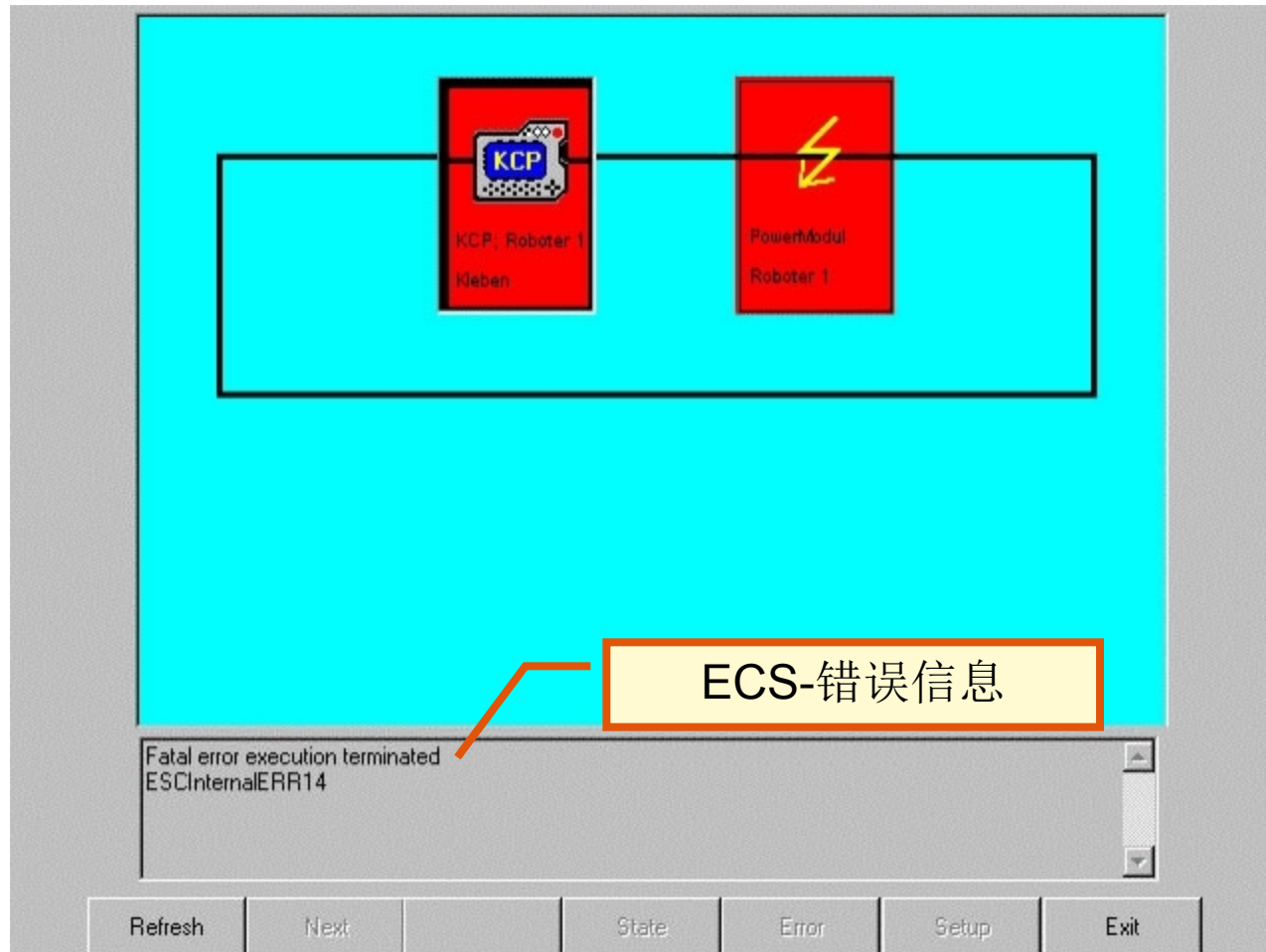


	Time	no.	Source	Message
i	07:40	20	/	External Emergency Stop Pressed
i	07:40	1033		Error on reading, driver: INTERBUS
i	07:40	208		Failure in ESC safety loop
i	07:40	1	/	EMERGENCY STOP

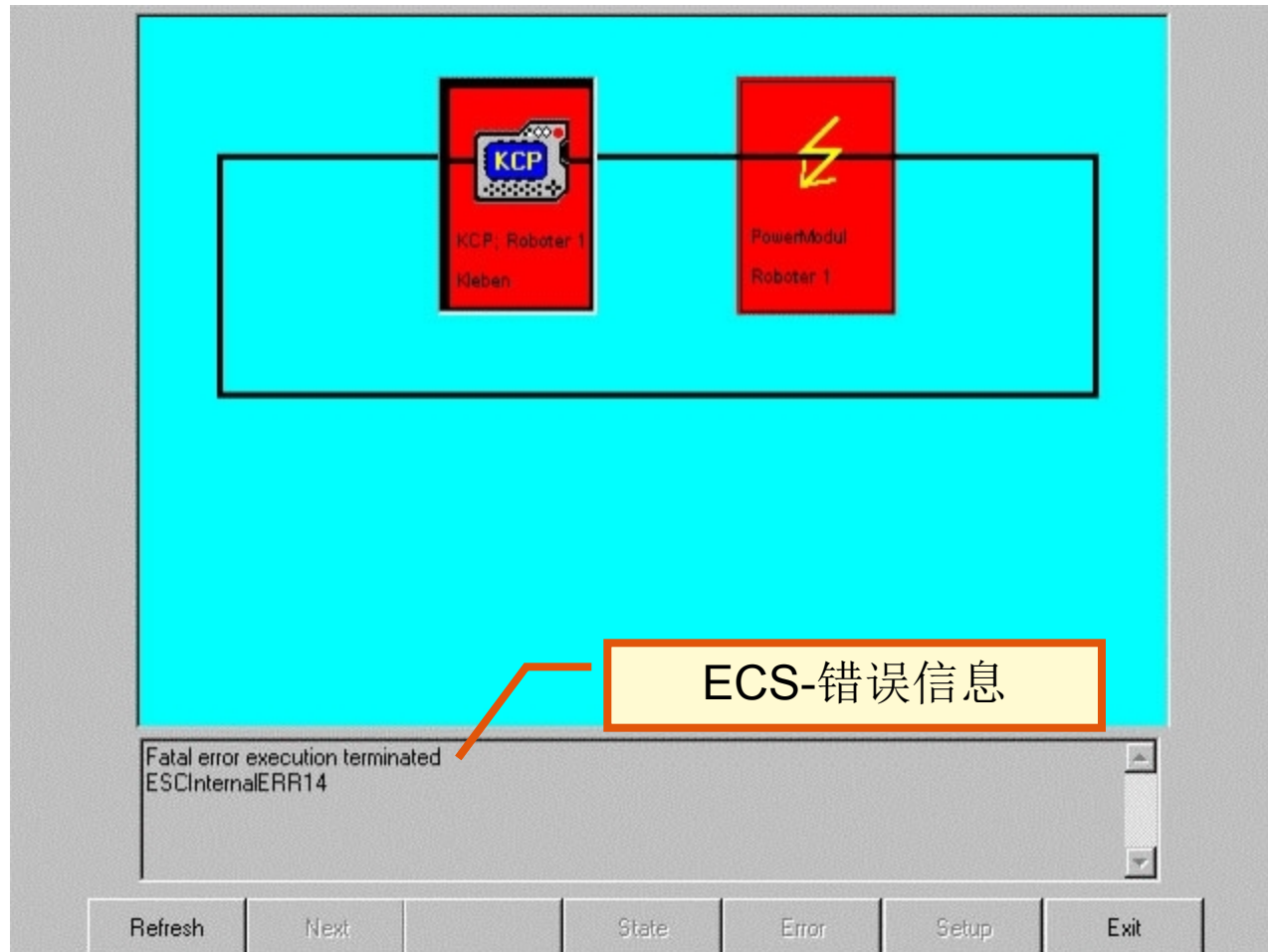
NUM CAPS S R -? POV=100% R_Name 07:40

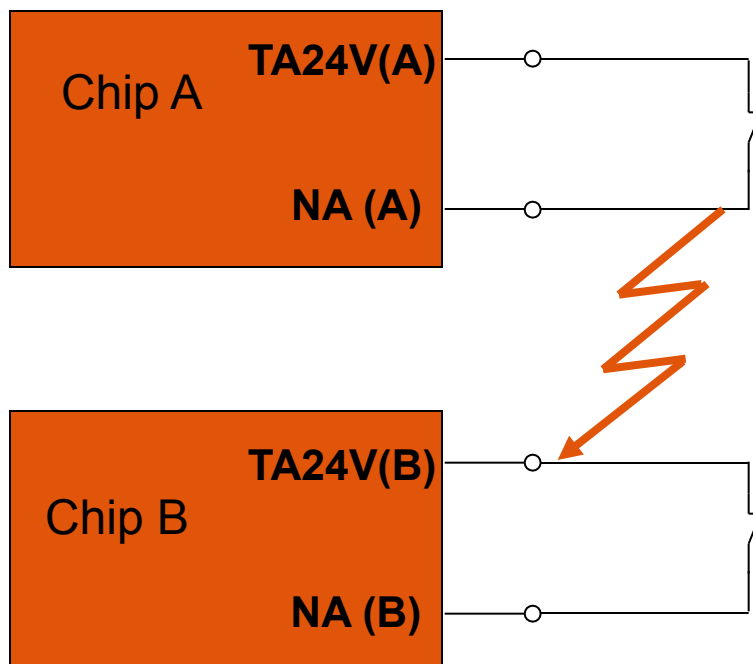
ECS-错误信息

ESC-电路故障,,电压损失“

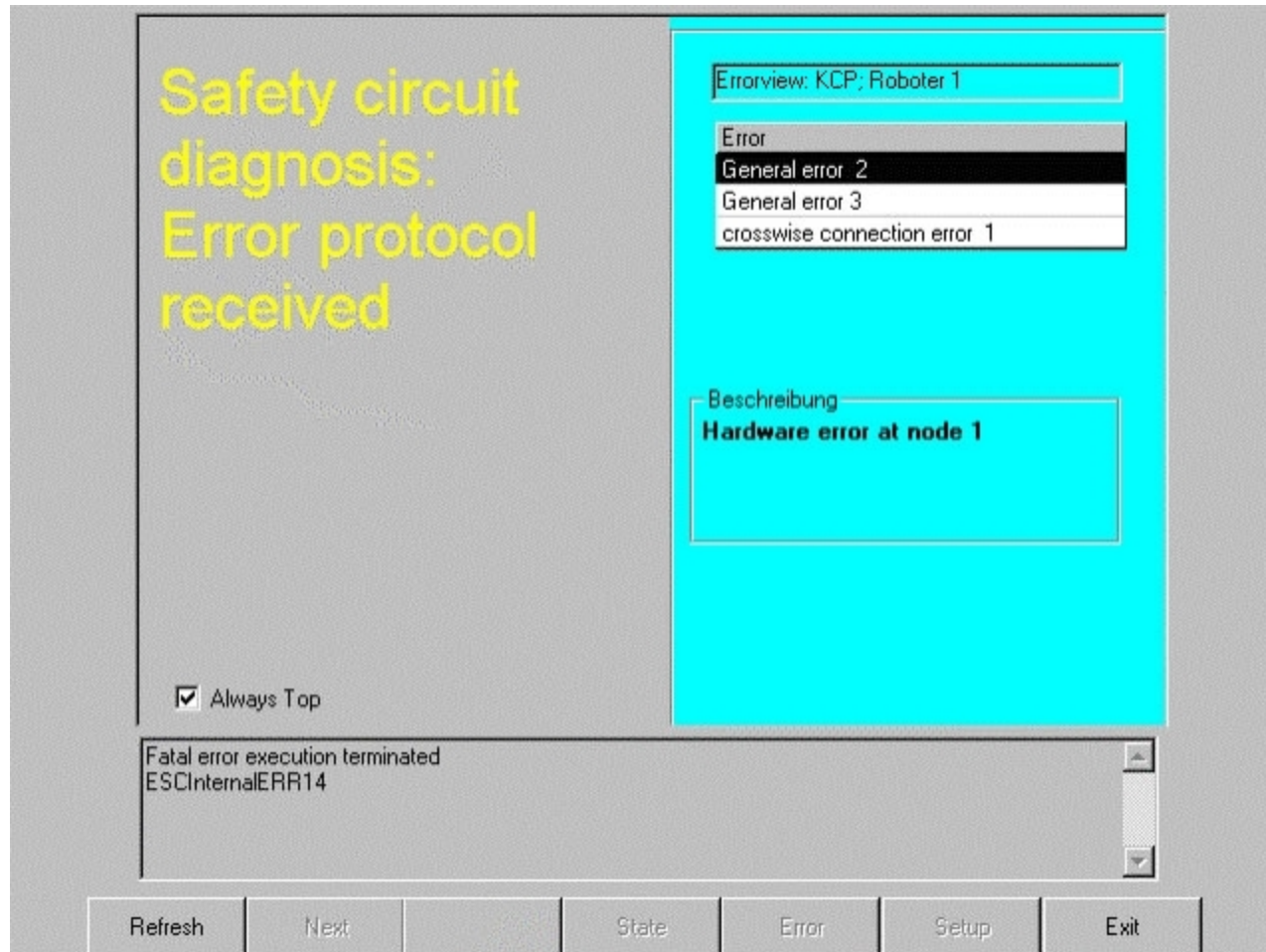


ESC-电路故障,,总线中断“

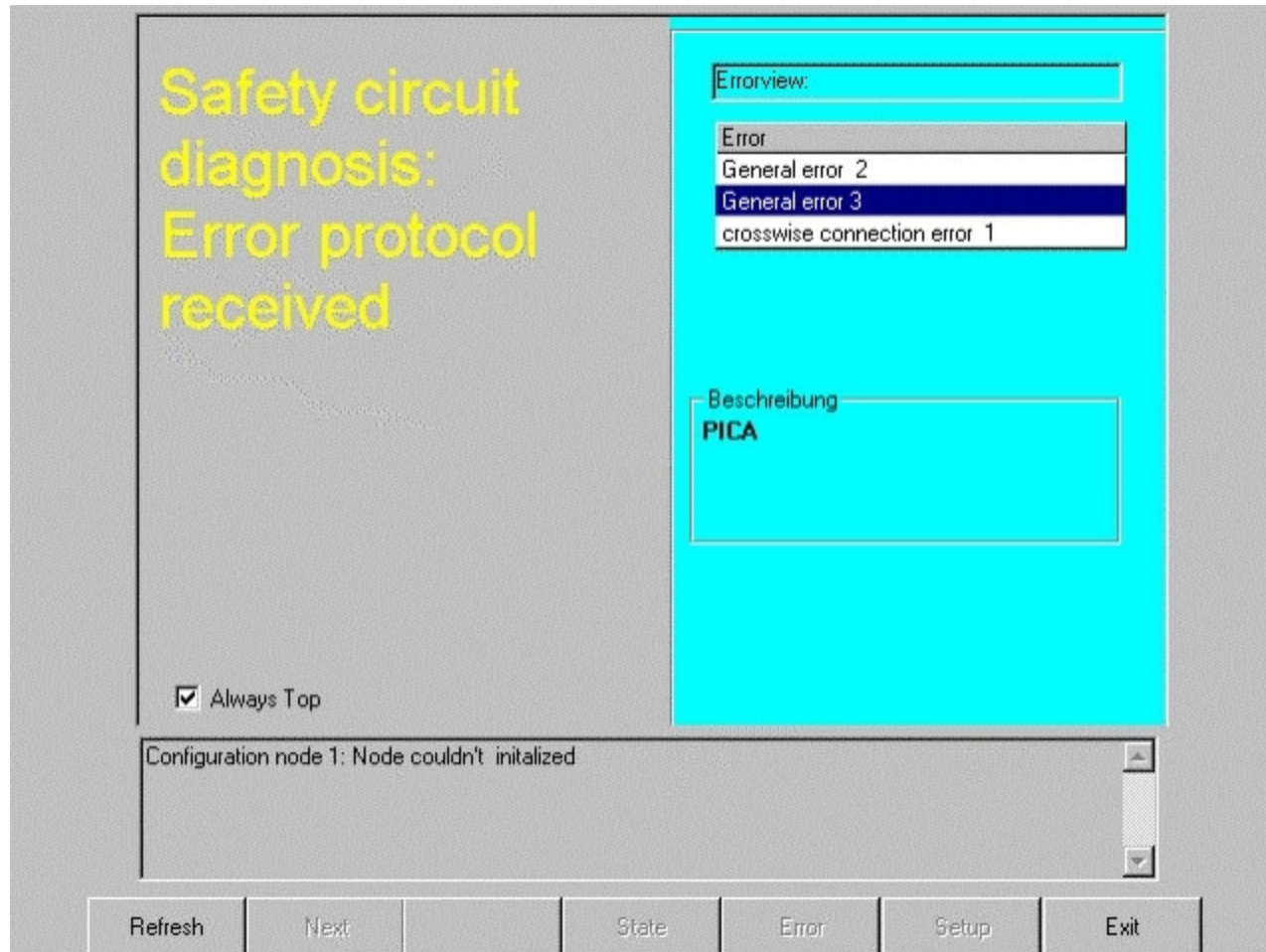




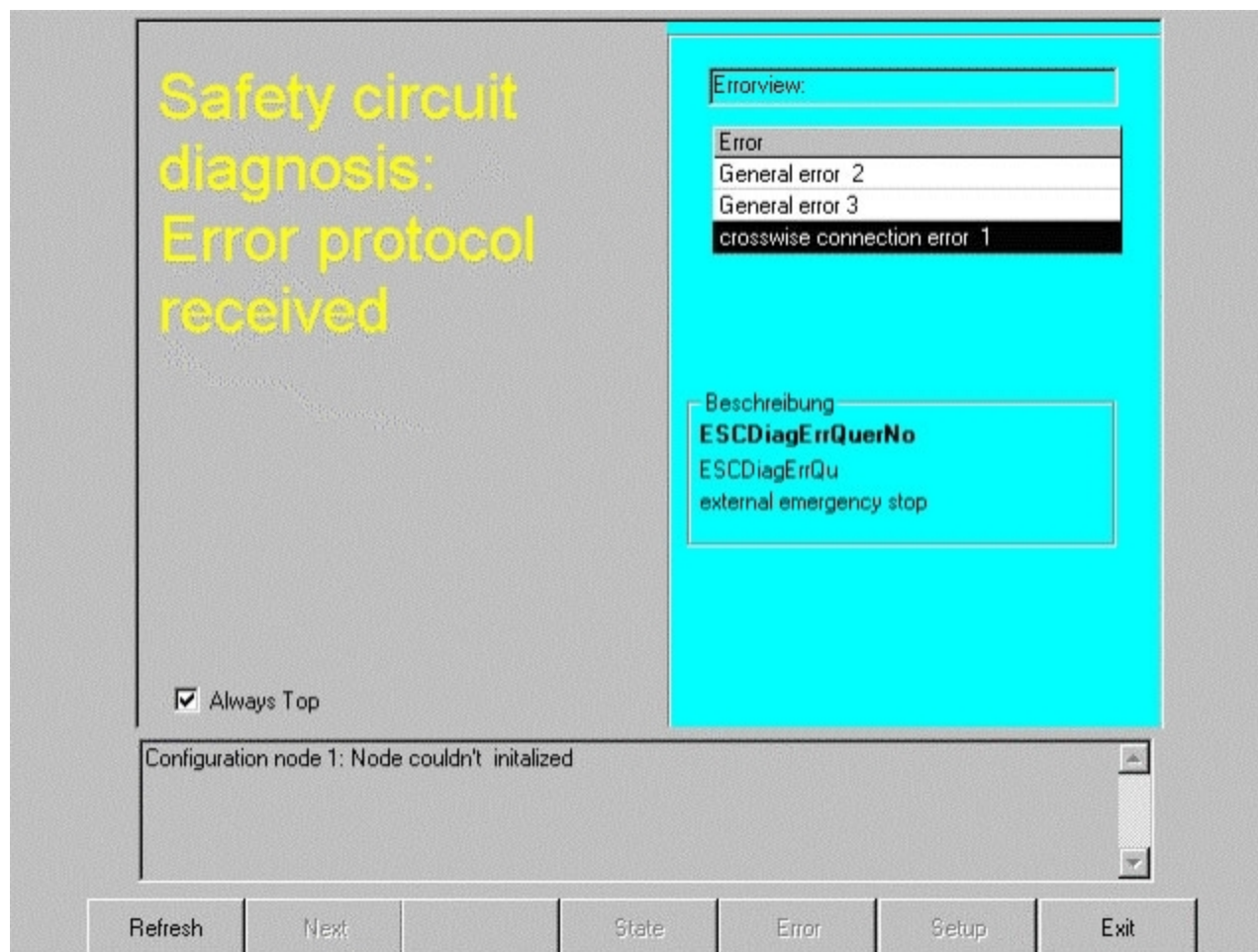
检查线路



检查线路



检查线路



检查线路

以上内容仅为本文档的试下载部分，为可阅读页数的一半内容。如要下载或阅读全文，请访问：<https://d.book118.com/756233202013011005>